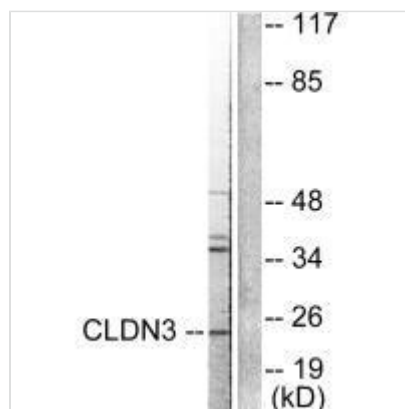




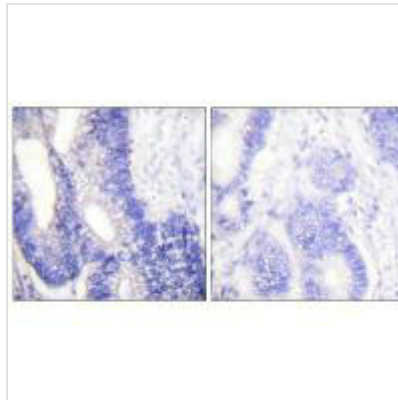
CLDN3 Antibody

Product Code	CSB-PA193301
Storage	Upon receipt, store at -20°C or -80°C. Avoid repeated freeze.
Uniprot No.	O15551
Immunogen	Synthesized peptide derived from Human Claudin 3.
Raised In	Rabbit
Species Reactivity	Human
Specificity	The antibody detects endogenous levels of total Claudin 3 protein.
Tested Applications	ELISA, WB, IHC, IF; WB:1:500-1:3000, IHC:1:50-1:100, IF:1:100-1:500
Form	Rabbit IgG in phosphate buffered saline (without Mg ²⁺ and Ca ²⁺), pH 7.4, 150mM NaCl, 0.02% sodium azide and 50% glycerol.
Purification Method	The antibody was affinity-purified from rabbit antiserum by affinity-chromatography using epitope-specific immunogen.
Clonality	Polyclonal
Alias	CLD3; CLDN3; CPE-R 2; CPE-receptor 2; Clostridium perfringens enterotoxin receptor 2
Product Type	Polyclonal Antibody
Immunogen Species	Homo sapiens (Human)
Target Names	CLDN3

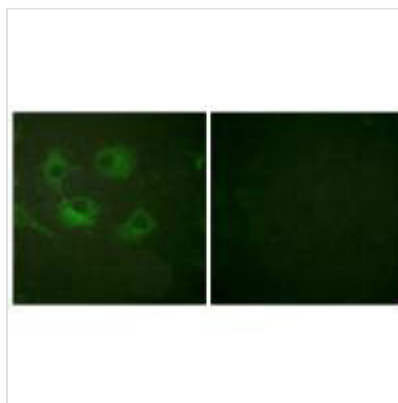
Image



Western blot analysis of extracts from HuvEc cells, using Claudin 3 antibody.



Immunohistochemical analysis of paraffin-embedded human colon carcinoma tissue using Claudin 3 antibody.



Immunofluorescence analysis of HuvEc cells, using Claudin 3 antibody.