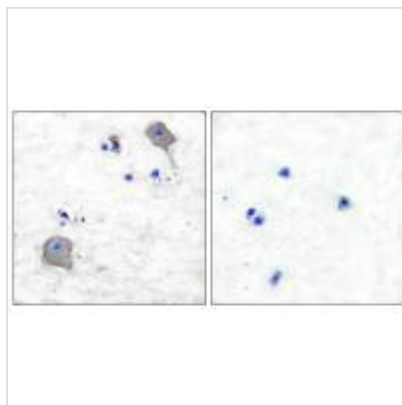




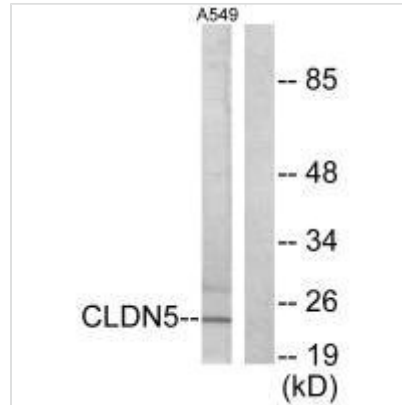
CLDN5 Antibody

Product Code	CSB-PA166761
Storage	Upon receipt, store at -20°C or -80°C. Avoid repeated freeze.
Uniprot No.	O00501
Immunogen	Synthesized peptide derived from Human CLDN5.
Raised In	Rabbit
Species Reactivity	Human,Mouse,Rat
Specificity	The antibody detects endogenous levels of total CLDN5 protein.
Tested Applications	ELISA,WB,IHC;WB:1:500-1:3000,IHC:1:50-1:100
Form	Rabbit IgG in phosphate buffered saline (without Mg ²⁺ and Ca ²⁺), pH 7.4, 150mM NaCl, 0.02% sodium azide and 50% glycerol.
Purification Method	The antibody was affinity-purified from rabbit antiserum by affinity-chromatography using epitope-specific immunogen.
Clonality	Polyclonal
Alias	CLD5; CLDN5; TMDVCF; Transmembrane protein deleted in VCFS;
Product Type	Polyclonal Antibody
Immunogen Species	Homo sapiens (Human)
Target Names	CLDN5

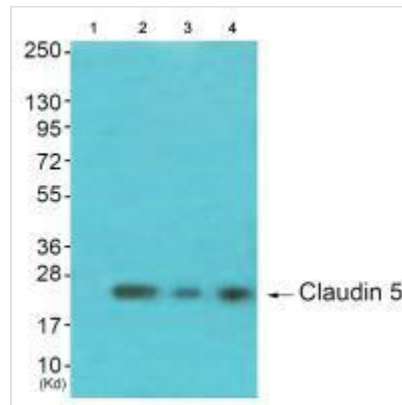
Image



Immunohistochemical analysis of paraffin-embedded human brain tissue using Claudin 5 antibody.



Western blot analysis of extracts from A549 cells, using Claudin 5 antibody.



Western blot analysis of extracts from 293 cells (Lane 2), K562 cells (Lane 3) and 3T3 cells (Lane 4), using Claudin 5 antibody. The lane on the left is treated with synthesized peptide.

Usage

For Research Use Only. Not for use in diagnostic or therapeutic procedures.