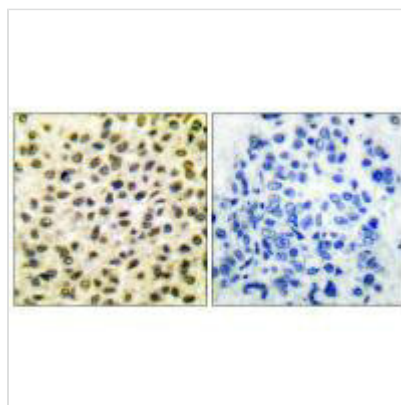




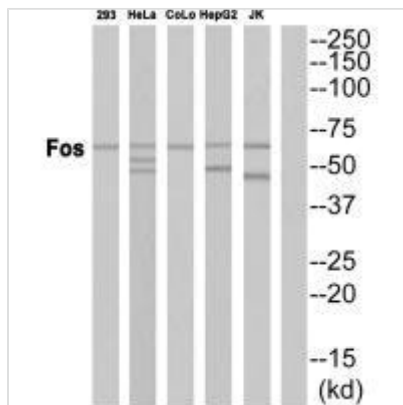
FOS Antibody

Product Code	CSB-PA292648
Storage	Upon receipt, store at -20°C or -80°C. Avoid repeated freeze.
Uniprot No.	P01100
Immunogen	Synthesized peptide derived from Human Fos.
Raised In	Rabbit
Species Reactivity	Human,Mouse,Rat
Specificity	The antibody detects endogenous levels of total Fos protein.
Tested Applications	ELISA,WB,IHC;WB:1:500-1:3000,IHC:1:50-1:100
Form	Rabbit IgG in phosphate buffered saline (without Mg ²⁺ and Ca ²⁺), pH 7.4, 150mM NaCl, 0.02% sodium azide and 50% glycerol.
Purification Method	The antibody was affinity-purified from rabbit antiserum by affinity-chromatography using epitope-specific immunogen.
Clonality	Polyclonal
Alias	Cellular oncogene fos; FOS; G0/G1 switch regulatory protein 7; G0S7; Proto-oncogene protein c-fos
Product Type	Polyclonal Antibody
Immunogen Species	Homo sapiens (Human)
Target Names	FOS

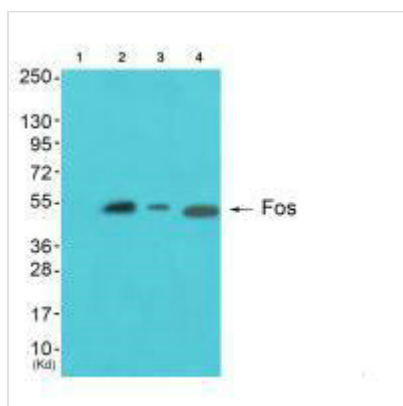
Image



Immunohistochemical analysis of paraffin-embedded human breast carcinoma tissue using Fos antibody.



Western blot analysis of extracts from HepG2 cells, using Fos antibody.



Western blot analysis of extracts from A549 cells (Lane 2), HeLa cells (Lane 3) and JK cells (Lane 4), using Fos antibody. The lane on the left is treated with synthesized peptide.

Usage

For Research Use Only. Not for use in diagnostic or therapeutic procedures.