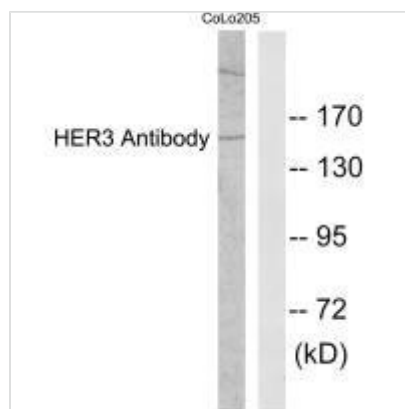




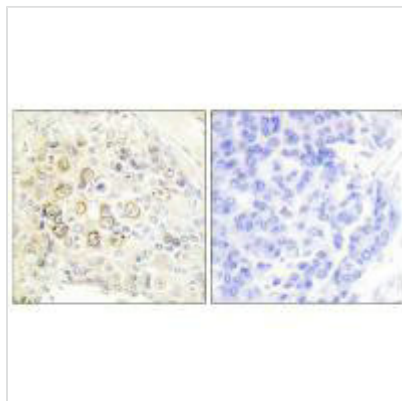
ERBB3 Antibody

Product Code	CSB-PA259090
Storage	Upon receipt, store at -20°C or -80°C. Avoid repeated freeze.
Uniprot No.	P21860
Immunogen	Synthesized peptide derived from N-terminal of Human HER3.
Raised In	Rabbit
Species Reactivity	Human
Specificity	The antibody detects endogenous levels of total HER3 protein.
Tested Applications	ELISA, WB, IHC; WB: 1:500-1:3000, IHC: 1:50-1:100
Form	Rabbit IgG in phosphate buffered saline (without Mg ²⁺ and Ca ²⁺), pH 7.4, 150mM NaCl, 0.02% sodium azide and 50% glycerol.
Purification Method	The antibody was affinity-purified from rabbit antiserum by affinity-chromatography using epitope-specific immunogen.
Clonality	Polyclonal
Alias	c-erbB3; EC 2.7.10.1; ERB3; ERBB3; HER3
Product Type	Polyclonal Antibody
Immunogen Species	Homo sapiens (Human)
Target Names	ERBB3

Image



Western blot analysis of extracts from COLO205 cells, using HER3 antibody.



Immunohistochemistry analysis of paraffin-embedded human breast carcinoma tissue using HER3 antibody.