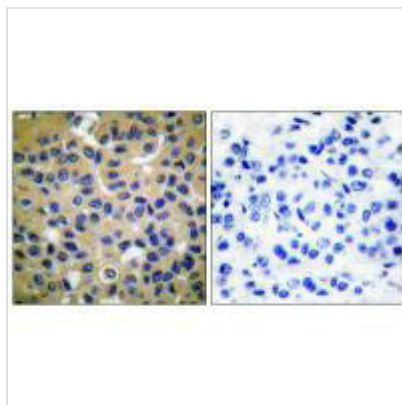




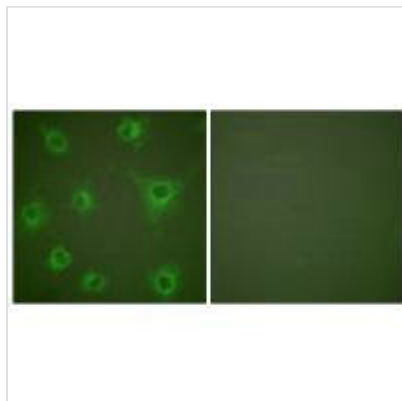
COL2A1 Antibody

Product Code	CSB-PA255449
Storage	Upon receipt, store at -20°C or -80°C. Avoid repeated freeze.
Uniprot No.	P02458
Immunogen	Synthesized peptide derived from Human Collagen II.
Raised In	Rabbit
Species Reactivity	Human,Mouse,Rat
Specificity	The antibody detects endogenous levels of total Collagen II protein.
Tested Applications	ELISA,WB,IHC,IF;WB:1:500-1:3000,IHC:1:50-1:100,IF:1:100-1:500
Form	Rabbit IgG in phosphate buffered saline (without Mg ²⁺ and Ca ²⁺), pH 7.4, 150mM NaCl, 0.02% sodium azide and 50% glycerol.
Purification Method	The antibody was affinity-purified from rabbit antiserum by affinity-chromatography using epitope-specific immunogen.
Clonality	Polyclonal
Alias	chondrocalcin; CO2A1; collagen alpha-1 (II); collagen type II alpha 1;
Product Type	Polyclonal Antibody
Immunogen Species	Homo sapiens (Human)
Target Names	COL2A1

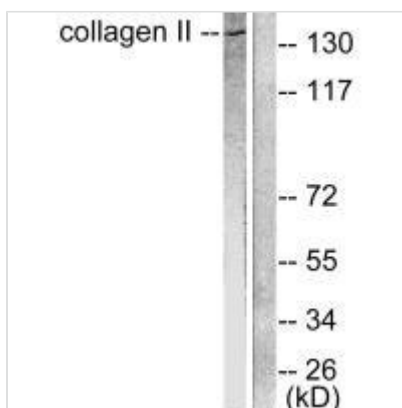
Image



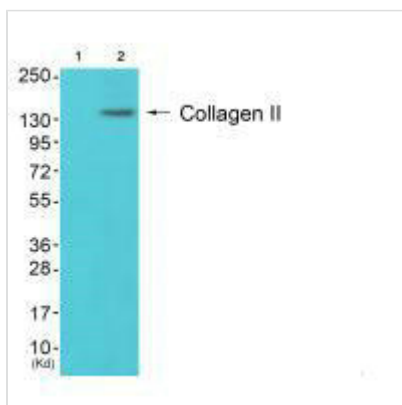
Immunohistochemical analysis of paraffin-embedded human breast carcinoma tissue using Collagen II antibody.



Immunofluorescence analysis of COS7 cells, using Collagen II antibody.



Western blot analysis of extracts from COL205 cells, using Collagen II antibody.



Western blot analysis of extracts from 3T3 cells (Lane 2), using Collagen II antibody. The lane on the left is treated with synthesized peptide.