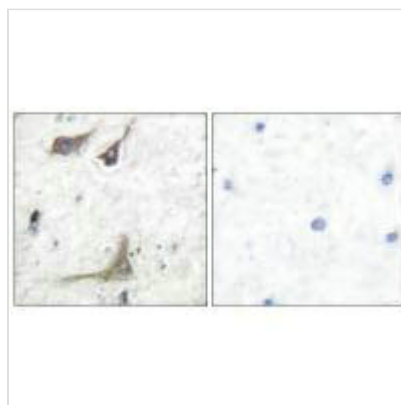




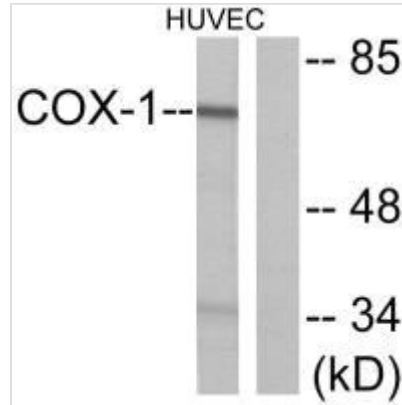
# PTGS1 Antibody

<b>Product Code</b>	CSB-PA164506
<b>Storage</b>	Upon receipt, store at -20°C or -80°C. Avoid repeated freeze.
<b>Uniprot No.</b>	P23219
<b>Immunogen</b>	Synthesized peptide derived from Human COX1.
<b>Raised In</b>	Rabbit
<b>Species Reactivity</b>	Human
<b>Specificity</b>	The antibody detects endogenous levels of total COX1 protein.
<b>Tested Applications</b>	ELISA,WB,IHC;WB:1:500-1:3000,IHC:1:50-1:100
<b>Form</b>	Rabbit IgG in phosphate buffered saline (without Mg <sup>2+</sup> and Ca <sup>2+</sup> ), pH 7.4, 150mM NaCl, 0.02% sodium azide and 50% glycerol.
<b>Purification Method</b>	The antibody was affinity-purified from rabbit antiserum by affinity-chromatography using epitope-specific immunogen.
<b>Clonality</b>	Polyclonal
<b>Alias</b>	COX3; PCOX1; CYCLOOXYGENASE 1; PARTIAL COX1 PROTEINS; PGHS1 CYCLOOXYGENASE 3
<b>Product Type</b>	Polyclonal Antibody
<b>Immunogen Species</b>	Homo sapiens (Human)
<b>Target Names</b>	PTGS1

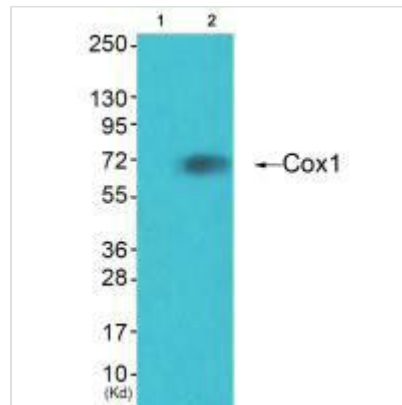
## Image



Immunohistochemical analysis of paraffin-embedded human brain tissue using COX1 antibody.



Western blot analysis of extracts from HuvEc cells, using COX1 antibody.



Western blot analysis of extracts from HuvEc cells (Lane 2), using Cox1 antibody. The lane on the left is treated with synthesized peptide.

**Usage**

For Research Use Only. Not for use in diagnostic or therapeutic procedures.