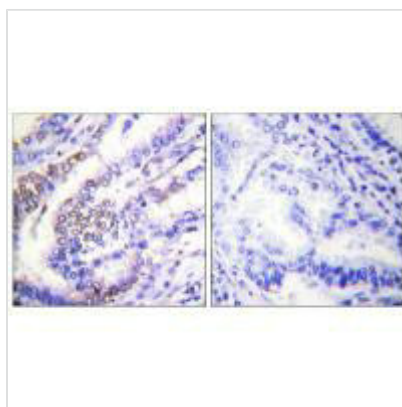




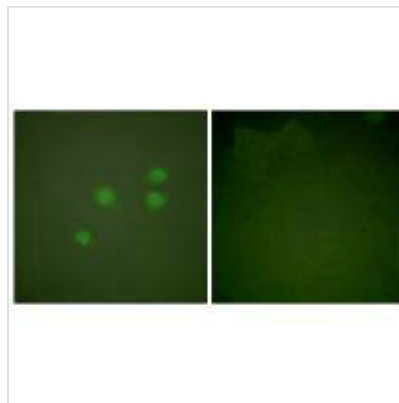
CCNE1 Antibody

Product Code	CSB-PA183203
Storage	Upon receipt, store at -20°C or -80°C. Avoid repeated freeze.
Uniprot No.	P24864
Immunogen	Synthesized peptide derived from Human Cyclin E1.
Raised In	Rabbit
Species Reactivity	Human,Mouse,Rat
Specificity	The antibody detects endogenous levels of total Cyclin E1 protein.
Tested Applications	ELISA,WB,IHC,IF;WB:1:500-1:3000,IHC:1:50-1:100,IF:1:100-1:500
Form	Rabbit IgG in phosphate buffered saline (without Mg ²⁺ and Ca ²⁺), pH 7.4, 150mM NaCl, 0.02% sodium azide and 50% glycerol.
Purification Method	The antibody was affinity-purified from rabbit antiserum by affinity-chromatography using epitope-specific immunogen.
Clonality	Polyclonal
Alias	cyclin E1; cyclin E1 isoform 1; cyclin E1 isoform 2; cyclin Es; cyclin Et
Product Type	Polyclonal Antibody
Immunogen Species	Homo sapiens (Human)
Target Names	CCNE1

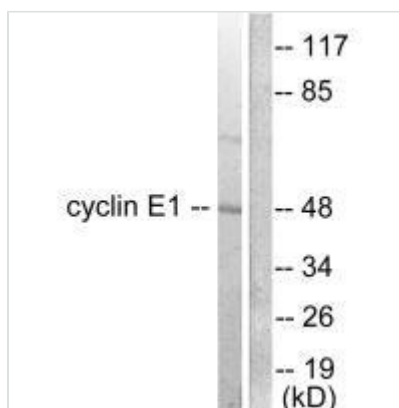
Image



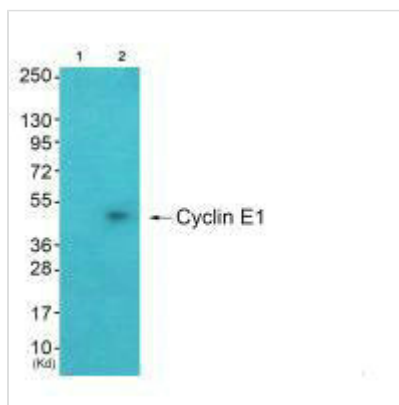
Immunohistochemical analysis of paraffin-embedded human lung carcinoma tissue using Cyclin E1 antibody.



Immunofluorescence analysis of A549 cells, using Cyclin E1 antibody.



Western blot analysis of extracts from K562 cells, using Cyclin E1 antibody.



Western blot analysis of extracts from A549 cells (Lane 2), using Cyclin E1 antibody. The lane on the left is treated with synthesized peptide.