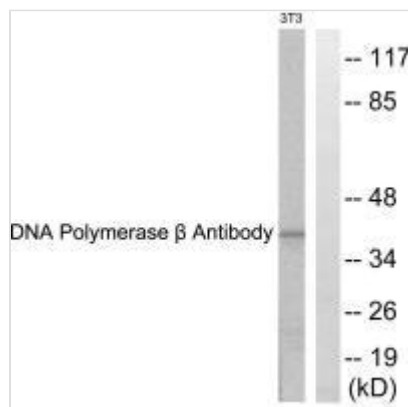




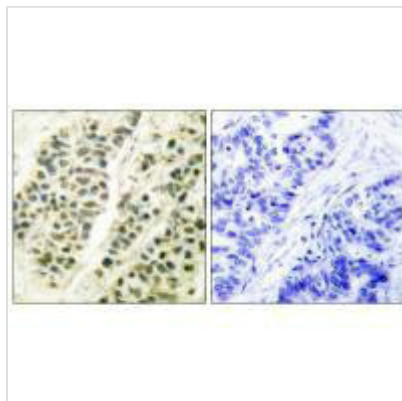
POLB Antibody

Product Code	CSB-PA910465
Storage	Upon receipt, store at -20°C or -80°C. Avoid repeated freeze.
Uniprot No.	P06746
Immunogen	Synthesized peptide derived from Human DNA Polymerase β .
Raised In	Rabbit
Species Reactivity	Human,Mouse,Rat
Specificity	The antibody detects endogenous levels of total DNA Polymerase β protein.
Tested Applications	ELISA,WB,IHC;WB:1:500-1:3000,IHC:1:50-1:100
Form	Rabbit IgG in phosphate buffered saline (without Mg^{2+} and Ca^{2+}), pH 7.4, 150mM NaCl, 0.02% sodium azide and 50% glycerol.
Purification Method	The antibody was affinity-purified from rabbit antiserum by affinity-chromatography using epitope-specific immunogen.
Clonality	Polyclonal
Alias	DNA polymerase beta; EC 2.7.7.7; EC 4.2.99;
Product Type	Polyclonal Antibody
Immunogen Species	Homo sapiens (Human)
Target Names	POLB

Image



Western blot analysis of extracts from NIH/3T3 cells, using DNA Polymerase β antibody.



Immunohistochemical analysis of paraffin-embedded human breast carcinoma tissue using DNA Polymerase β antibody.