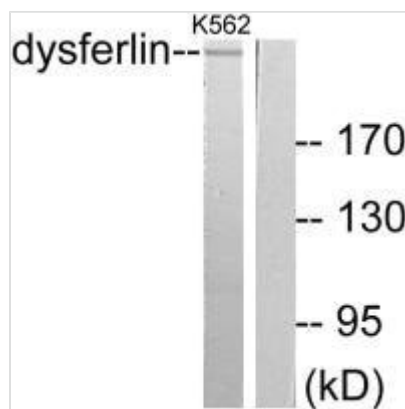




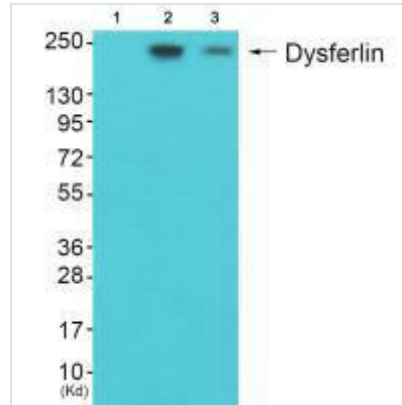
# DYSF Antibody

<b>Product Code</b>	CSB-PA184651
<b>Storage</b>	Upon receipt, store at -20°C or -80°C. Avoid repeated freeze.
<b>Uniprot No.</b>	O75923
<b>Immunogen</b>	Synthesized peptide derived from Human Dysferlin.
<b>Raised In</b>	Rabbit
<b>Species Reactivity</b>	Human, Mouse
<b>Specificity</b>	The antibody detects endogenous levels of total Dysferlin protein.
<b>Tested Applications</b>	ELISA, WB; WB: 1:500-1:3000
<b>Form</b>	Rabbit IgG in phosphate buffered saline (without Mg <sup>2+</sup> and Ca <sup>2+</sup> ), pH 7.4, 150mM NaCl, 0.02% sodium azide and 50% glycerol.
<b>Purification Method</b>	The antibody was affinity-purified from rabbit antiserum by affinity-chromatography using epitope-specific immunogen.
<b>Clonality</b>	Polyclonal
<b>Alias</b>	dysferlin; limb girdle muscular dystrophy 2B (autosomal recessive);
<b>Product Type</b>	Polyclonal Antibody
<b>Immunogen Species</b>	Homo sapiens (Human)
<b>Target Names</b>	DYSF

## Image



Western blot analysis of extracts from K562 cells, using Dysferlin antibody.



Western blot analysis of extracts from JK cells (Lane 2) and K562 cells (Lane 3), using Dysferlin antibody. The lane on the left is treated with synthesized peptide.

## Usage

For Research Use Only. Not for use in diagnostic or therapeutic procedures.