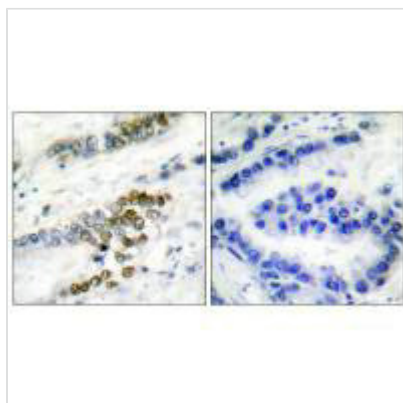




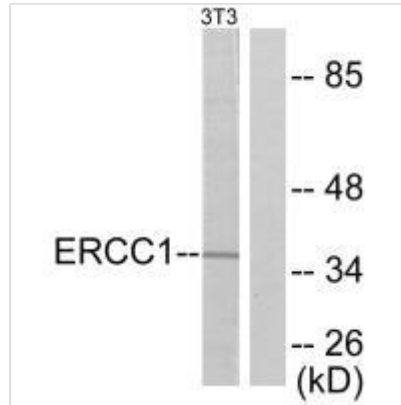
ERCC1 Antibody

Product Code	CSB-PA827559
Storage	Upon receipt, store at -20°C or -80°C. Avoid repeated freeze.
Uniprot No.	P07992
Immunogen	Synthesized peptide derived from Human ERCC1.
Raised In	Rabbit
Species Reactivity	Human, Mouse
Specificity	The antibody detects endogenous levels of total ERCC1 protein.
Tested Applications	ELISA, WB, IHC; WB: 1:500-1:3000, IHC: 1:50-1:100
Form	Rabbit IgG in phosphate buffered saline (without Mg ²⁺ and Ca ²⁺), pH 7.4, 150mM NaCl, 0.02% sodium azide and 50% glycerol.
Purification Method	The antibody was affinity-purified from rabbit antiserum by affinity-chromatography using epitope-specific immunogen.
Clonality	Polyclonal
Alias	UV20; DNA REPAIR DEFECT UV-20 OF CHINESE HAMSTER OVARY CELLS; COMPLEMENTATION OF EXCISION-REPAIR; COMPLEMENTING DEFECTIVE IN CHINESE HAMSTER; excision repair cross-complementing 1 isoform 1
Product Type	Polyclonal Antibody
Immunogen Species	Homo sapiens (Human)
Target Names	ERCC1

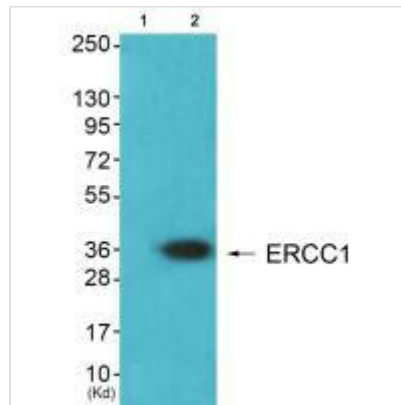
Image



Immunohistochemical analysis of paraffin-embedded human lung carcinoma tissue using ERCC1 antibody.



Western blot analysis of extracts from NIH/3T3 cells, using ERCC1 antibody.



Western blot analysis of extracts from HeLa cells (Lane 2), using ERCC1 antibody. The lane on the left is treated with synthesized peptide.

Usage

For Research Use Only. Not for use in diagnostic or therapeutic procedures.