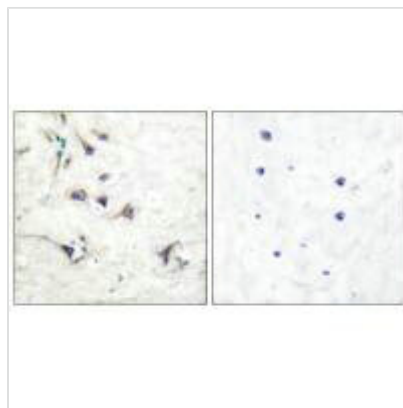




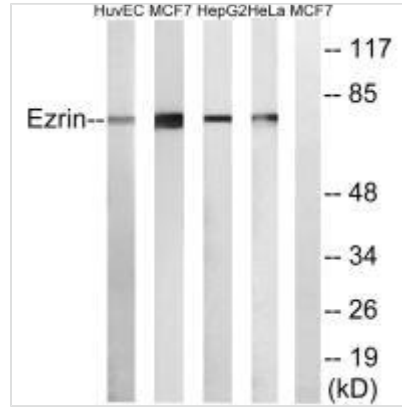
EZR Antibody

Product Code	CSB-PA088060
Storage	Upon receipt, store at -20°C or -80°C. Avoid repeated freeze.
Uniprot No.	P15311
Immunogen	Synthesized peptide derived from Human Ezrin.
Raised In	Rabbit
Species Reactivity	Human, Mouse, Rat
Specificity	The antibody detects endogenous levels of total Ezrin protein.
Tested Applications	ELISA, WB, IHC; WB: 1:500-1:3000, IHC: 1:50-1:100
Form	Rabbit IgG in phosphate buffered saline (without Mg ²⁺ and Ca ²⁺), pH 7.4, 150mM NaCl, 0.02% sodium azide and 50% glycerol.
Purification Method	The antibody was affinity-purified from rabbit antiserum by affinity-chromatography using epitope-specific immunogen.
Clonality	Polyclonal
Alias	CVIL; CVL; CYTOVILLIN;
Product Type	Polyclonal Antibody
Immunogen Species	Homo sapiens (Human)
Target Names	EZR

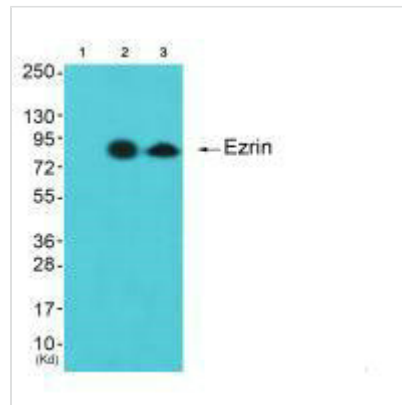
Image



Immunohistochemical analysis of paraffin-embedded human brain tissue using Ezrin antibody.



Western blot analysis of extracts from NIH/3T3 cells, using Ezrin antibody.



Western blot analysis of extracts from cos-7 cells (Lane 2) and 3T3 cells (Lane 3), using Ezrin antibody. The lane on the left is treated with synthesized peptide.

Usage

For Research Use Only. Not for use in diagnostic or therapeutic procedures.