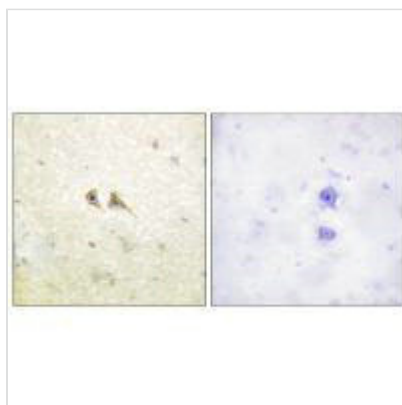




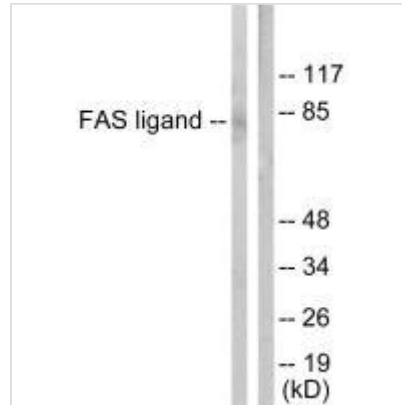
# FASLG Antibody

<b>Product Code</b>	CSB-PA243242
<b>Storage</b>	Upon receipt, store at -20°C or -80°C. Avoid repeated freeze.
<b>Uniprot No.</b>	P48023
<b>Immunogen</b>	Synthesized peptide derived from internal of Human FAS ligand.
<b>Raised In</b>	Rabbit
<b>Species Reactivity</b>	Human
<b>Specificity</b>	The antibody detects endogenous levels of total FAS ligand protein.
<b>Tested Applications</b>	ELISA, WB, IHC; WB:1:500-1:3000, IHC:1:50-1:100
<b>Form</b>	Rabbit IgG in phosphate buffered saline (without Mg <sup>2+</sup> and Ca <sup>2+</sup> ), pH 7.4, 150mM NaCl, 0.02% sodium azide and 50% glycerol.
<b>Purification Method</b>	The antibody was affinity-purified from rabbit antiserum by affinity-chromatography using epitope-specific immunogen.
<b>Clonality</b>	Polyclonal
<b>Alias</b>	Tumor necrosis factor ligand superfamily member 6; Fas antigen ligand; Fas ligand; CD178 antigen; CD95L protein
<b>Product Type</b>	Polyclonal Antibody
<b>Immunogen Species</b>	Homo sapiens (Human)
<b>Target Names</b>	FASLG

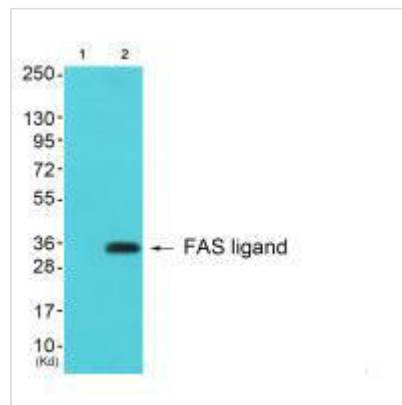
## Image



Immunohistochemistry analysis of paraffin-embedded human brain tissue using FAS ligand antibody.



Western blot analysis of extracts from 293 cells, using FAS ligand antibody.



Western blot analysis of extracts from 3T3 cells (Lane 2), using FAS ligand antibody. The lane on the left is treated with synthesized peptide.