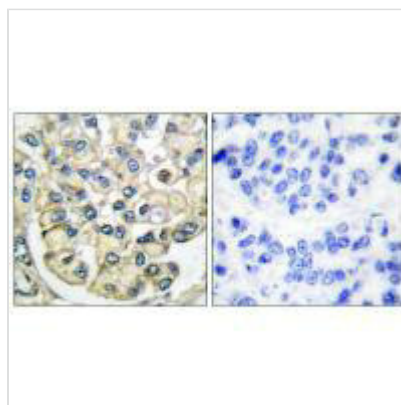




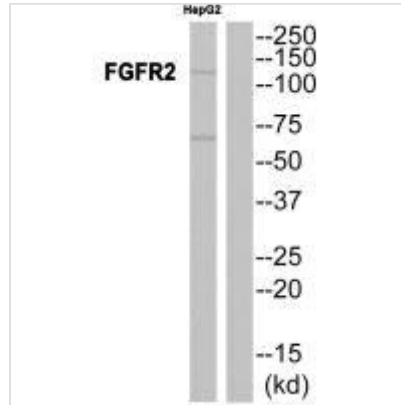
FGFR2 Antibody

Product Code	CSB-PA077444
Storage	Upon receipt, store at -20°C or -80°C. Avoid repeated freeze.
Uniprot No.	P21802
Immunogen	Synthesized peptide derived from Human FGFR2.
Raised In	Rabbit
Species Reactivity	Human, Mouse
Specificity	The antibody detects endogenous levels of total FGFR2 protein.
Tested Applications	ELISA, WB, IHC; WB: 1:500-1:3000, IHC: 1:50-1:100
Form	Rabbit IgG in phosphate buffered saline (without Mg ²⁺ and Ca ²⁺), pH 7.4, 150mM NaCl, 0.02% sodium azide and 50% glycerol.
Purification Method	The antibody was affinity-purified from rabbit antiserum by affinity-chromatography using epitope-specific immunogen.
Clonality	Polyclonal
Alias	Fibroblast growth factor receptor 2; EC 2.7.10.1; FGFR-2; Keratinocyte growth factor receptor 2;
Product Type	Polyclonal Antibody
Immunogen Species	Homo sapiens (Human)
Target Names	FGFR2

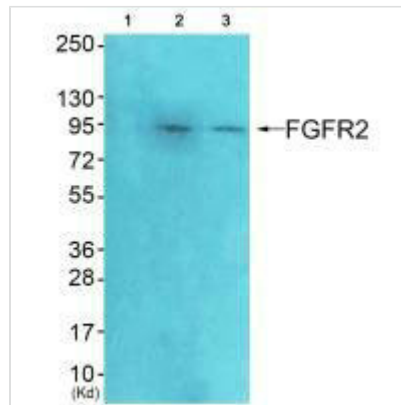
Image



Immunohistochemical analysis of paraffin-embedded human breast carcinoma tissue using FGFR2 antibody.



Western blot analysis of extracts from A549 cells, using FGFR2 antibody.



Western blot analysis of extracts from HeLa cells (Lane 2) and A549 cells (Lane 3), using FGFR2 antibody. The lane on the left is treated with synthesized peptide.

Usage

For Research Use Only. Not for use in diagnostic or therapeutic procedures.