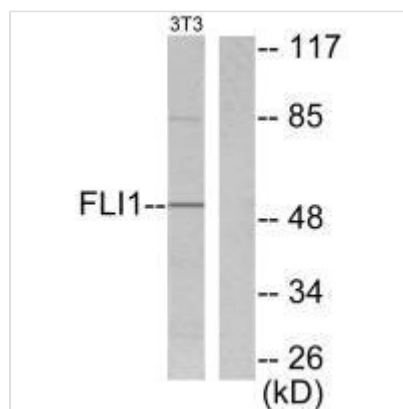




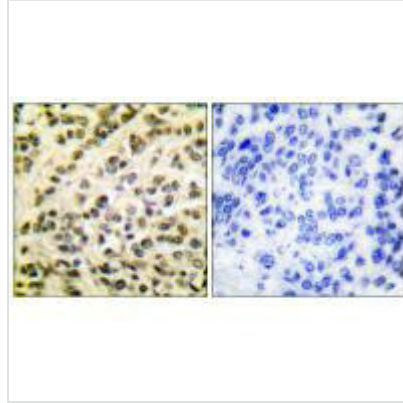
FLI1 Antibody

Product Code	CSB-PA983300
Storage	Upon receipt, store at -20°C or -80°C. Avoid repeated freeze.
Uniprot No.	Q01543
Immunogen	Synthesized peptide derived from Human FLI1.
Raised In	Rabbit
Species Reactivity	Human,Mouse
Specificity	The antibody detects endogenous levels of total FLI1 protein.
Tested Applications	ELISA,WB,IHC;WB:1:500-1:3000,IHC:1:50-1:100
Form	Rabbit IgG in phosphate buffered saline (without Mg ²⁺ and Ca ²⁺), pH 7.4, 150mM NaCl, 0.02% sodium azide and 50% glycerol.
Purification Method	The antibody was affinity-purified from rabbit antiserum by affinity-chromatography using epitope-specific immunogen.
Clonality	Polyclonal
Alias	EWSR2; SIC-1; FLI1/EWS FUSION GENE; VIRAL INTEGRATION REGION FLI1; MOUSE HOMOLOG OF EWING SARCOMA BREAKPOINT REGION 2
Product Type	Polyclonal Antibody
Immunogen Species	Homo sapiens (Human)
Target Names	FLI1

Image



Western blot analysis of extracts from NIH/3T3 cells, using FLI1 antibody.



Immunohistochemical analysis of paraffin-embedded human breast carcinoma tissue using FLI1 antibody.

Usage

For Research Use Only. Not for use in diagnostic or therapeutic procedures.