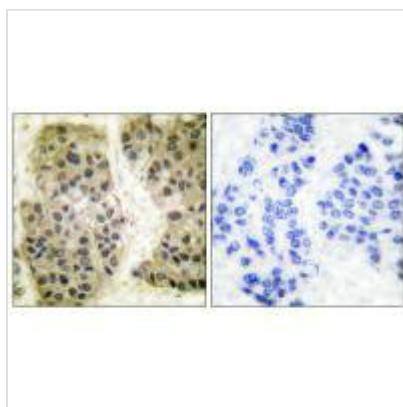




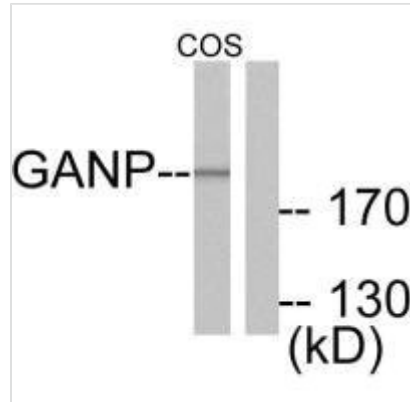
# MCM3AP Antibody

<b>Product Code</b>	CSB-PA243490
<b>Storage</b>	Upon receipt, store at -20°C or -80°C. Avoid repeated freeze.
<b>Uniprot No.</b>	O60318
<b>Immunogen</b>	Synthesized peptide derived from Human GANP.
<b>Raised In</b>	Rabbit
<b>Species Reactivity</b>	Human, Mouse
<b>Specificity</b>	The antibody detects endogenous levels of total GANP protein.
<b>Tested Applications</b>	ELISA, WB, IHC, IF; WB: 1:500-1:3000, IHC: 1:50-1:100, IF: 1:100-1:500
<b>Form</b>	Rabbit IgG in phosphate buffered saline (without Mg <sup>2+</sup> and Ca <sup>2+</sup> ), pH 7.4, 150mM NaCl, 0.02% sodium azide and 50% glycerol.
<b>Purification Method</b>	The antibody was affinity-purified from rabbit antiserum by affinity-chromatography using epitope-specific immunogen.
<b>Clonality</b>	Polyclonal
<b>Alias</b>	80 kda MCM3-associated protein; GANP protein; KIAA0572; MAP80; MCM3A
<b>Product Type</b>	Polyclonal Antibody
<b>Immunogen Species</b>	Homo sapiens (Human)
<b>Target Names</b>	MCM3AP

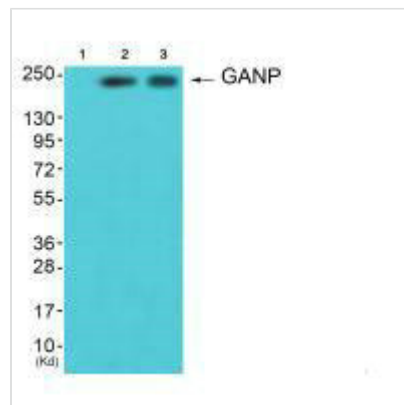
## Image



Immunohistochemical analysis of paraffin-embedded human breast carcinoma tissue using GANP antibody.



Western blot analysis of extracts from NIH/3T3 cells, using GANP antibody.



Western blot analysis of extracts from HepG2 cells (Lane 2) and A549 cells (Lane 3), using GANP antibody. The lane on the left is treated with synthesized peptide.

## Usage

For Research Use Only. Not for use in diagnostic or therapeutic procedures.