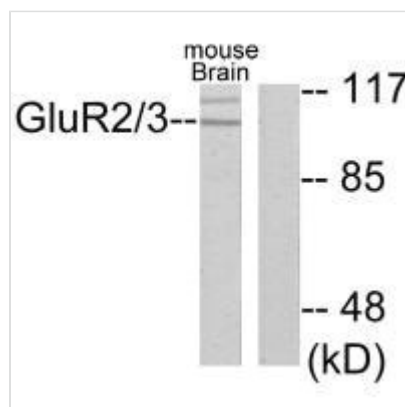




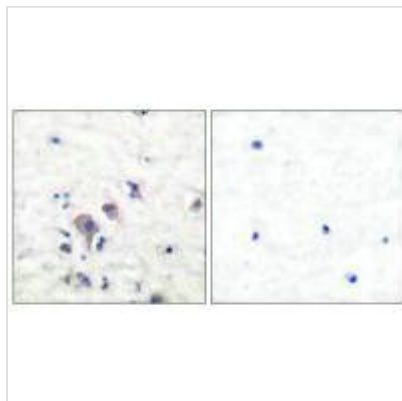
GRM3 Antibody

Product Code	CSB-PA203777
Storage	Upon receipt, store at -20°C or -80°C. Avoid repeated freeze.
Uniprot No.	Q14832
Immunogen	Synthesized peptide derived from Human GluR2/3.
Raised In	Rabbit
Species Reactivity	Human,Mouse,Rat
Specificity	The antibody detects endogenous levels of total GluR2/3 protein.
Tested Applications	ELISA,WB,IHC;WB:1:500-1:3000,IHC:1:50-1:100
Form	Rabbit IgG in phosphate buffered saline (without Mg ²⁺ and Ca ²⁺), pH 7.4, 150mM NaCl, 0.02% sodium azide and 50% glycerol.
Purification Method	The antibody was affinity-purified from rabbit antiserum by affinity-chromatography using epitope-specific immunogen.
Clonality	Polyclonal
Alias	GPRC1C; GRM3; MGR3; Metabotropic glutamate receptor 3 precursor; glutamate receptor metabotropic type 3
Product Type	Polyclonal Antibody
Immunogen Species	Homo sapiens (Human)
Target Names	GRM3

Image



Western blot analysis of extracts from mouse brain, using GluR2/3 antibody.



Immunohistochemical analysis of paraffin-embedded human brain tissue using GluR2/3 antibody.