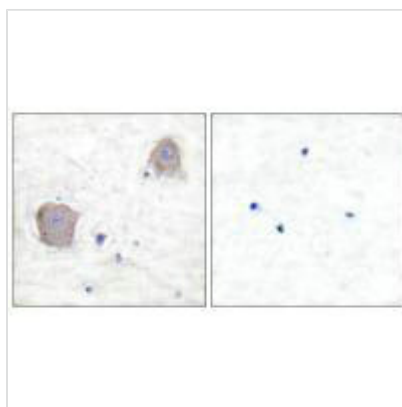




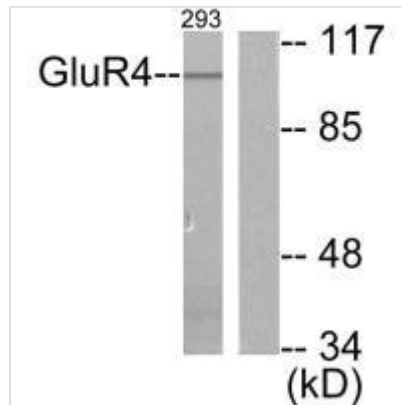
GRM4 Antibody

Product Code	CSB-PA693203
Storage	Upon receipt, store at -20°C or -80°C. Avoid repeated freeze.
Uniprot No.	Q14833
Immunogen	Synthesized peptide derived from Human GluR4.
Raised In	Rabbit
Species Reactivity	Human,Mouse,Rat
Specificity	The antibody detects endogenous levels of total GluR4 protein.
Tested Applications	ELISA,WB,IHC;WB:1:500-1:3000,IHC:1:50-1:100
Form	Rabbit IgG in phosphate buffered saline (without Mg ²⁺ and Ca ²⁺), pH 7.4, 150mM NaCl, 0.02% sodium azide and 50% glycerol.
Purification Method	The antibody was affinity-purified from rabbit antiserum by affinity-chromatography using epitope-specific immunogen.
Clonality	Polyclonal
Alias	Metabotropic glutamate receptor 4; mGluR4; GPRC1D; MGLUR4; GRM4
Product Type	Polyclonal Antibody
Immunogen Species	Homo sapiens (Human)
Target Names	GRM4

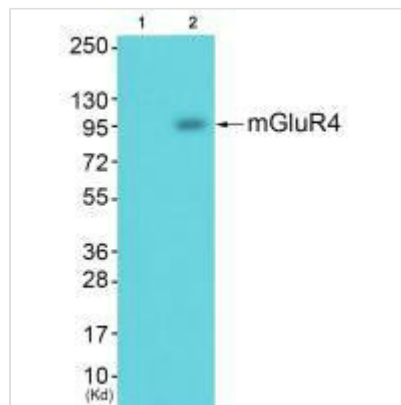
Image



Immunohistochemical analysis of paraffin-embedded human brain tissue using GluR4 antibody.



Western blot analysis of extracts from 293 cells, untreated or treated with Forskolin (40nM, 30mins), using GluR4 antibody.



Western blot analysis of extracts from JK cells (Lane 2), using mGluR4 antibody. The lane on the left is treated with synthesized peptide.