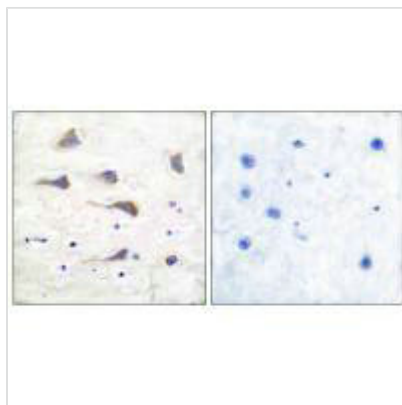




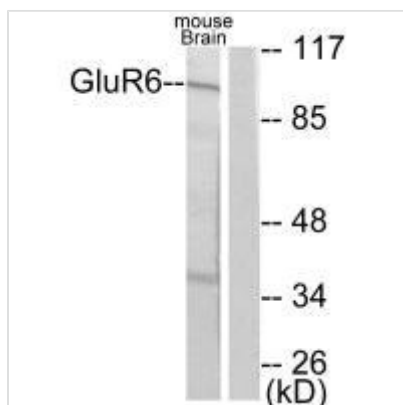
# GRM6 Antibody

<b>Product Code</b>	CSB-PA180398
<b>Storage</b>	Upon receipt, store at -20°C or -80°C. Avoid repeated freeze.
<b>Uniprot No.</b>	O15303
<b>Immunogen</b>	Synthesized peptide derived from Human GluR6.
<b>Raised In</b>	Rabbit
<b>Species Reactivity</b>	Human
<b>Specificity</b>	The antibody detects endogenous levels of total GluR6 protein.
<b>Tested Applications</b>	ELISA, WB, IHC; WB:1:500-1:3000, IHC:1:50-1:100
<b>Form</b>	Rabbit IgG in phosphate buffered saline (without Mg <sup>2+</sup> and Ca <sup>2+</sup> ), pH 7.4, 150mM NaCl, 0.02% sodium azide and 50% glycerol.
<b>Purification Method</b>	The antibody was affinity-purified from rabbit antiserum by affinity-chromatography using epitope-specific immunogen.
<b>Clonality</b>	Polyclonal
<b>Alias</b>	EAA4; GLR6; MGC74427; bA487F5.1 (glutamate receptor; ionotropic
<b>Product Type</b>	Polyclonal Antibody
<b>Immunogen Species</b>	Homo sapiens (Human)
<b>Target Names</b>	GRM6

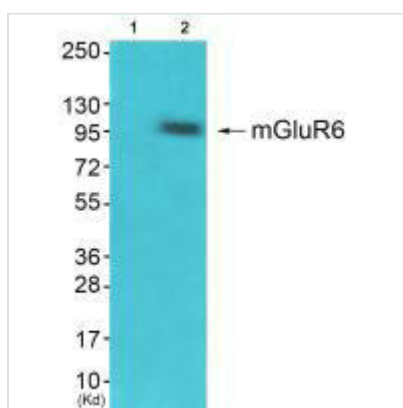
## Image



Immunohistochemical analysis of paraffin-embedded human brain tissue using GluR6 antibody.



Western blot analysis of extracts from mouse brain, using GluR6 antibody.



Western blot analysis of extracts from HepG2 cells (Lane 2), using mGluR6 antibody. The lane on the left is treated with synthesized peptide.