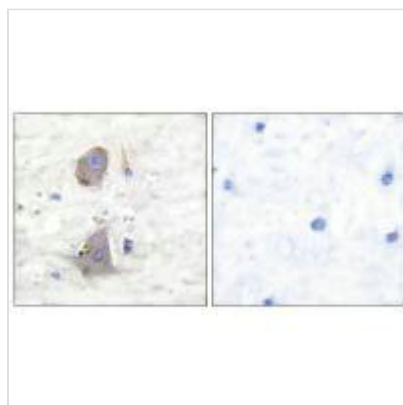




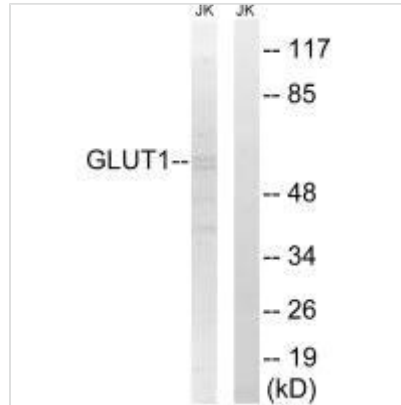
SLC2A1 Antibody

Product Code	CSB-PA258056
Storage	Upon receipt, store at -20°C or -80°C. Avoid repeated freeze.
Uniprot No.	P11166
Immunogen	Synthesized peptide derived from Human GLUT1.
Raised In	Rabbit
Species Reactivity	Human,Mouse,Rat
Specificity	The antibody detects endogenous levels of total GLUT1 protein.
Tested Applications	ELISA,WB,IHC;WB:1:500-1:3000,IHC:1:50-1:100
Form	Rabbit IgG in phosphate buffered saline (without Mg ²⁺ and Ca ²⁺), pH 7.4, 150mM NaCl, 0.02% sodium azide and 50% glycerol.
Purification Method	The antibody was affinity-purified from rabbit antiserum by affinity-chromatography using epitope-specific immunogen.
Clonality	Polyclonal
Alias	ERYTHROCYTE/HEPATOMA GLUCOSE TRANSPORTER; GLUCOSE TRANSPORTER 1;
Product Type	Polyclonal Antibody
Immunogen Species	Homo sapiens (Human)
Target Names	SLC2A1

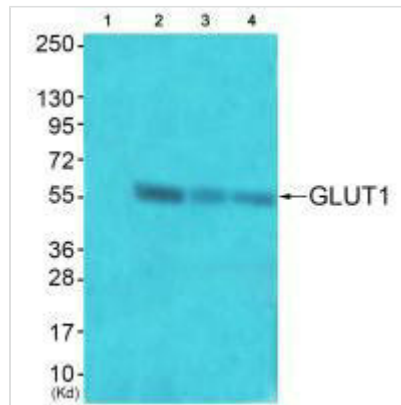
Image



Immunohistochemical analysis of paraffin-embedded human brain tissue using GLUT1 antibody.



Western blot analysis of extracts from Jurkat cells, using GLUT1 antibody.



Western blot analysis of extracts from JK cells (Lane 2), COS7 cells (Lane 3) and HuvEc cells (Lane 4), using GLUT1 antibody. The lane on the left is treated with synthesized peptide.

Usage

For Research Use Only. Not for use in diagnostic or therapeutic procedures.