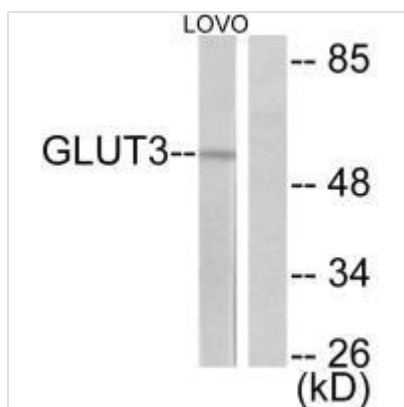




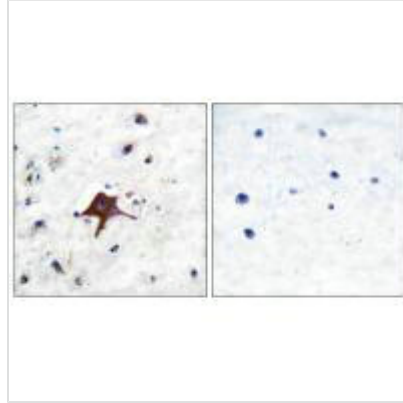
SLC2A3 Antibody

Product Code	CSB-PA599495
Storage	Upon receipt, store at -20°C or -80°C. Avoid repeated freeze.
Uniprot No.	P11169
Immunogen	Synthesized peptide derived from Human GLUT3.
Raised In	Rabbit
Species Reactivity	Human
Specificity	The antibody detects endogenous levels of total GLUT3 protein.
Tested Applications	ELISA,WB,IHC;WB:1:500-1:3000,IHC:1:50-1:100
Form	Rabbit IgG in phosphate buffered saline (without Mg ²⁺ and Ca ²⁺), pH 7.4, 150mM NaCl, 0.02% sodium azide and 50% glycerol.
Purification Method	The antibody was affinity-purified from rabbit antiserum by affinity-chromatography using epitope-specific immunogen.
Clonality	Polyclonal
Alias	GLUT3P1; SLC2A3P; GLUCOSE TRANSPORTER 3 PSEUDOGENE 1; GLUCOSE TRANSPORTER; FETAL SKELETAL MUSCLE SOLUTE CARRIER FAMILY 2 MEMBER 3 PSEUDOGENE
Product Type	Polyclonal Antibody
Immunogen Species	Homo sapiens (Human)
Target Names	SLC2A3

Image



Western blot analysis of extracts from LOVO cells, using GLUT3 antibody.



Immunohistochemical analysis of paraffin-embedded human brain tissue using GLUT3 antibody.

Usage

For Research Use Only. Not for use in diagnostic or therapeutic procedures.