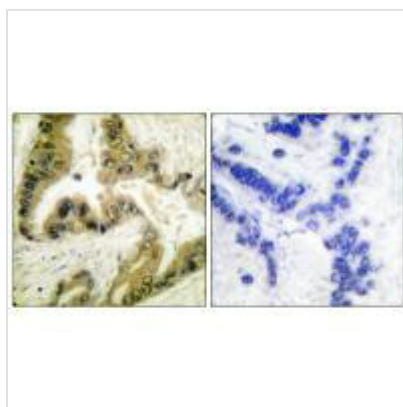




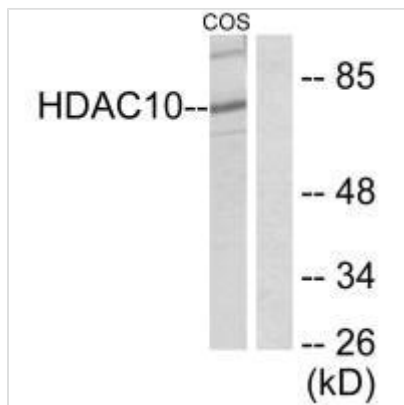
# HDAC10 Antibody

<b>Product Code</b>	CSB-PA249520
<b>Storage</b>	Upon receipt, store at -20°C or -80°C. Avoid repeated freeze.
<b>Uniprot No.</b>	Q969S8
<b>Immunogen</b>	Synthesized peptide derived from Human HDAC10.
<b>Raised In</b>	Rabbit
<b>Species Reactivity</b>	Human,Mouse,Rat
<b>Specificity</b>	The antibody detects endogenous levels of total HDAC10 protein.
<b>Tested Applications</b>	ELISA,WB,IHC;WB:1:500-1:3000,IHC:1:50-1:100
<b>Form</b>	Rabbit IgG in phosphate buffered saline (without Mg <sup>2+</sup> and Ca <sup>2+</sup> ), pH 7.4, 150mM NaCl, 0.02% sodium azide and 50% glycerol.
<b>Purification Method</b>	The antibody was affinity-purified from rabbit antiserum by affinity-chromatography using epitope-specific immunogen.
<b>Clonality</b>	Polyclonal
<b>Alias</b>	Histone deacetylase 10; HD10;
<b>Product Type</b>	Polyclonal Antibody
<b>Immunogen Species</b>	Homo sapiens (Human)
<b>Target Names</b>	HDAC10

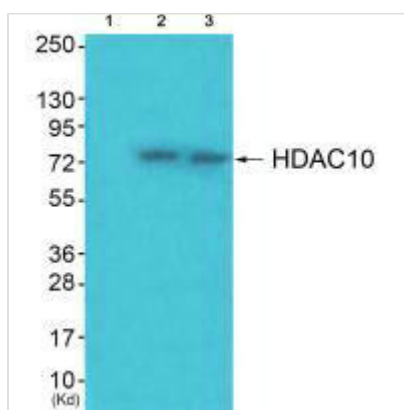
## Image



Immunohistochemical analysis of paraffin-embedded human lung carcinoma tissue using HDAC10 antibody.



Western blot analysis of extracts from COS7 cells, using HDAC10 antibody.



Western blot analysis of extracts from JK cells (Lane 2) and cos-7 cells (Lane 3), using HDAC10 antibody. The lane on the left is treated with synthesized peptide.

**Usage**

For Research Use Only. Not for use in diagnostic or therapeutic procedures.