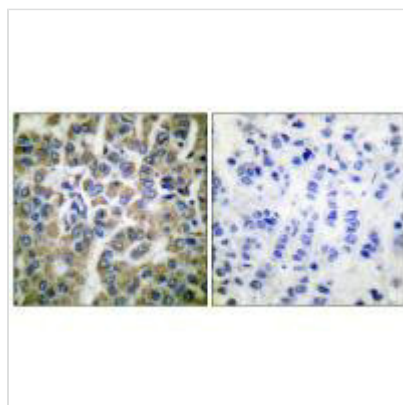




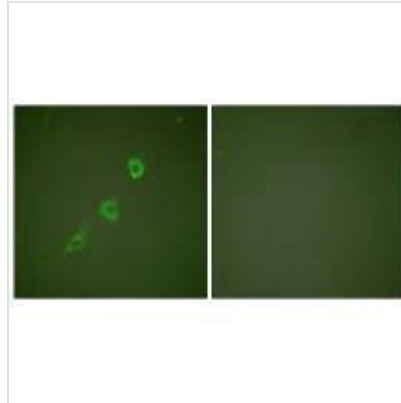
HSPE1 Antibody

Product Code	CSB-PA977270
Storage	Upon receipt, store at -20°C or -80°C. Avoid repeated freeze.
Uniprot No.	P61604
Immunogen	Synthesized peptide derived from Human HSP10.
Raised In	Rabbit
Species Reactivity	Human, Mouse, Rat
Specificity	The antibody detects endogenous levels of total HSP10 protein.
Tested Applications	ELISA, WB, IHC, IF; WB: 1:500-1:3000, IHC: 1:50-1:100, IF: 1:100-1:500
Form	Rabbit IgG in phosphate buffered saline (without Mg ²⁺ and Ca ²⁺), pH 7.4, 150mM NaCl, 0.02% sodium azide and 50% glycerol.
Purification Method	The antibody was affinity-purified from rabbit antiserum by affinity-chromatography using epitope-specific immunogen.
Clonality	Polyclonal
Alias	CHAPERONIN 10 HOMOLOG; GroES HOMOLOG; HEAT-SHOCK 10-KD PROTEIN; cpn10 HOMOLOG; heat shock 10kDa protein 1 (chaperonin 10)
Product Type	Polyclonal Antibody
Immunogen Species	Homo sapiens (Human)
Target Names	HSPE1

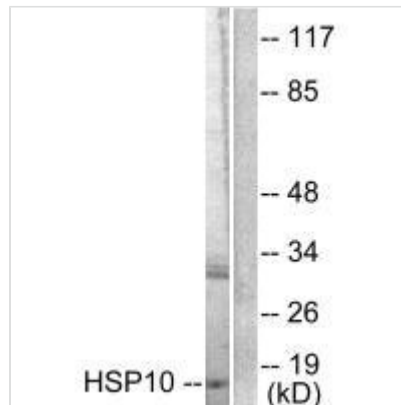
Image



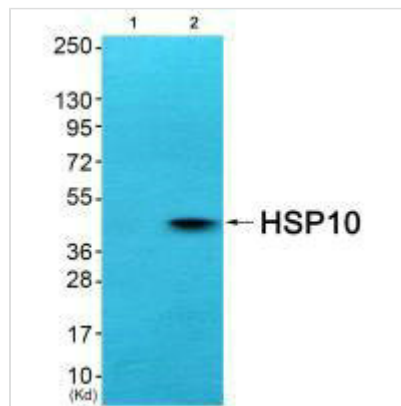
Immunohistochemical analysis of paraffin-embedded human breast carcinoma tissue using HSP10 antibody.



Immunofluorescence analysis of NIH/3T3 cells, using HSP10 antibody.



Western blot analysis of extracts from NIH/3T3 cells, using HSP10 antibody.



Western blot analysis of extracts from COS7 cells (Lane 2), using HSP10 antibody. The lane on the left is treated with synthesized peptide.

Usage

For Research Use Only. Not for use in diagnostic or therapeutic procedures.