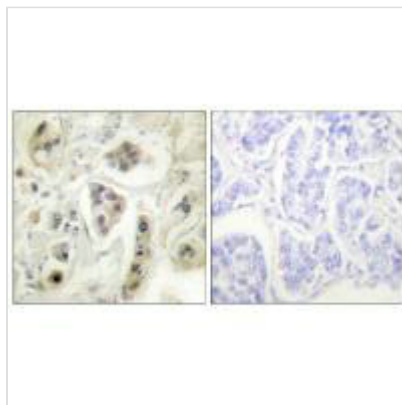




HSPD1 Antibody

Product Code	CSB-PA229520
Storage	Upon receipt, store at -20°C or -80°C. Avoid repeated freeze.
Uniprot No.	P10809
Immunogen	Synthesized peptide derived from Human HSP60.
Raised In	Rabbit
Species Reactivity	Human,Mouse,Rat
Specificity	The antibody detects endogenous levels of total HSP60 protein.
Tested Applications	ELISA,WB,IHC,IF;WB:1:500-1:3000,IHC:1:50-1:100,IF:1:100-1:500
Form	Rabbit IgG in phosphate buffered saline (without Mg ²⁺ and Ca ²⁺), pH 7.4, 150mM NaCl, 0.02% sodium azide and 50% glycerol.
Purification Method	The antibody was affinity-purified from rabbit antiserum by affinity-chromatography using epitope-specific immunogen.
Clonality	Polyclonal
Alias	CPN60; CHAPERONIN 60-KD; GroEL E. COLI HOMOLOG OF HEAT-SHOCK 60-KD PROTEIN 1; heat shock 60kDa protein 1 (chaperonin);
Product Type	Polyclonal Antibody
Immunogen Species	Homo sapiens (Human)
Target Names	HSPD1

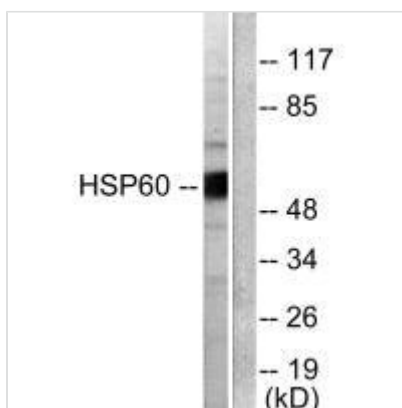
Image



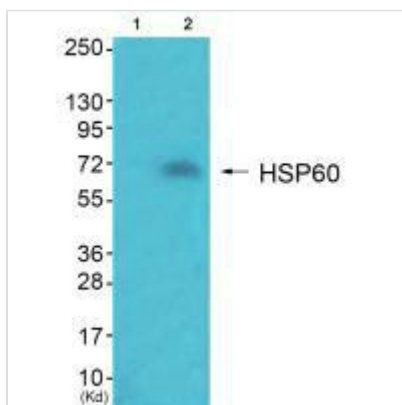
Immunohistochemical analysis of paraffin-embedded human lung carcinoma tissue using HSP60 antibody.



Immunofluorescence analysis of HepG2 cells, using HSP60 antibody.



Western blot analysis of extracts from COLO205 cells, using HSP60 antibody.



Western blot analysis of extracts from JK cells (Lane 2), using HSP60 antibody. The lane on the left is treated with synthesized peptide.