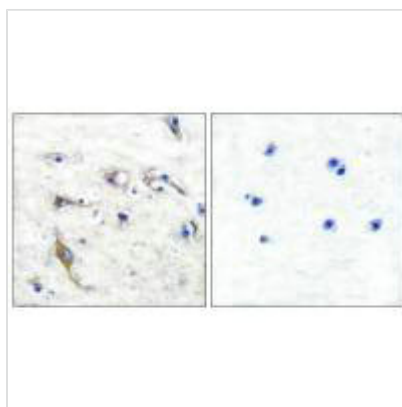




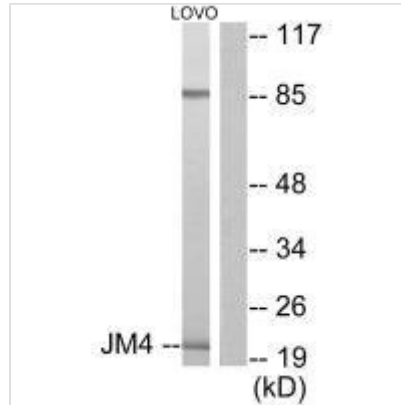
PRAF2 Antibody

Product Code	CSB-PA576120
Storage	Upon receipt, store at -20°C or -80°C. Avoid repeated freeze.
Uniprot No.	O60831
Immunogen	Synthesized peptide derived from Human JM4.
Raised In	Rabbit
Species Reactivity	Human,Mouse,Rat
Specificity	The antibody detects endogenous levels of total JM4 protein.
Tested Applications	ELISA,WB,IHC;WB:1:500-1:3000,IHC:1:50-1:100
Form	Rabbit IgG in phosphate buffered saline (without Mg ²⁺ and Ca ²⁺), pH 7.4, 150mM NaCl, 0.02% sodium azide and 50% glycerol.
Purification Method	The antibody was affinity-purified from rabbit antiserum by affinity-chromatography using epitope-specific immunogen.
Clonality	Polyclonal
Alias	PRA1 family protein 2; PRAF2;
Product Type	Polyclonal Antibody
Immunogen Species	Homo sapiens (Human)
Target Names	PRAF2

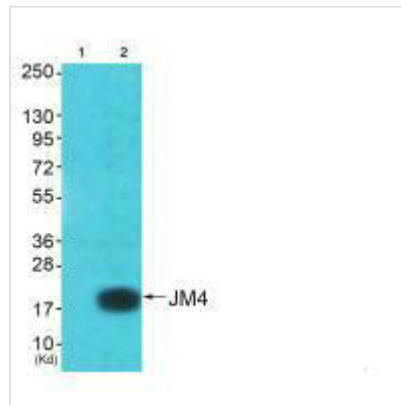
Image



Immunohistochemical analysis of paraffin-embedded human brain tissue using JM4 antibody.



Western blot analysis of extracts from LOVO cells, using JM4 antibody.



Western blot analysis of extracts from A549 cells (Lane 2), using JM4 antibody. The lane on the left is treated with synthesized peptide.

Usage

For Research Use Only. Not for use in diagnostic or therapeutic procedures.