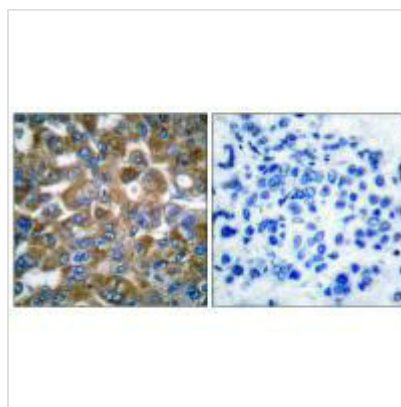




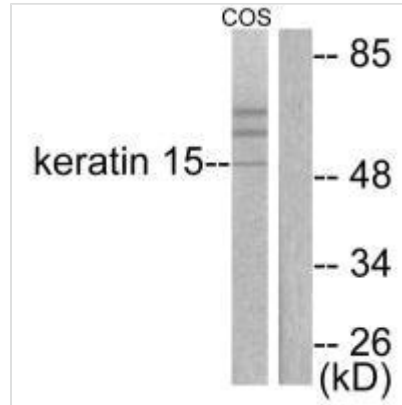
KRT15 Antibody

Product Code	CSB-PA189927
Storage	Upon receipt, store at -20°C or -80°C. Avoid repeated freeze.
Uniprot No.	P19012
Immunogen	Synthesized peptide derived from Human Keratin 15.
Raised In	Rabbit
Species Reactivity	Human,Mouse,Rat
Specificity	The antibody detects endogenous levels of total Keratin 15 protein.
Tested Applications	ELISA,WB,IHC;WB:1:500-1:3000,IHC:1:50-1:100
Form	Rabbit IgG in phosphate buffered saline (without Mg ²⁺ and Ca ²⁺), pH 7.4, 150mM NaCl, 0.02% sodium azide and 50% glycerol.
Purification Method	The antibody was affinity-purified from rabbit antiserum by affinity-chromatography using epitope-specific immunogen.
Clonality	Polyclonal
Alias	Keratin type I cytoskeletal 15; Cytokeratin-15; CK-15; K15;
Product Type	Polyclonal Antibody
Immunogen Species	Homo sapiens (Human)
Target Names	KRT15

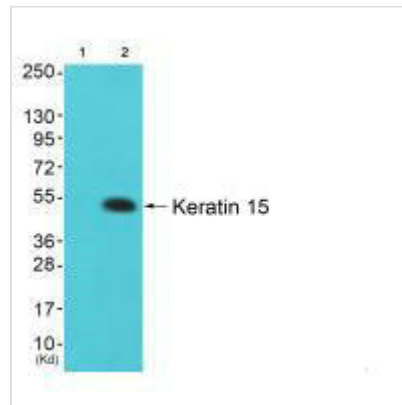
Image



Immunohistochemical analysis of paraffin-embedded human breast carcinoma tissue using Keratin 15 antibody.



Western blot analysis of extracts from COS7 cells, using Keratin 15 antibody.



Western blot analysis of extracts from colo cells (Lane 2), using Keratin 15 antibody. The lane on the left is treated with synthesized peptide.

Usage

For Research Use Only. Not for use in diagnostic or therapeutic procedures.