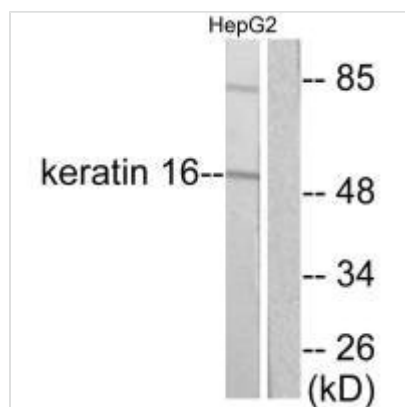




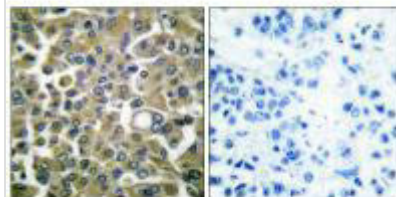
KRT16 Antibody

Product Code	CSB-PA984046
Storage	Upon receipt, store at -20°C or -80°C. Avoid repeated freeze.
Uniprot No.	P08779
Immunogen	Synthesized peptide derived from Human Keratin 16.
Raised In	Rabbit
Species Reactivity	Human,Mouse,Rat
Specificity	The antibody detects endogenous levels of total Keratin 16 protein.
Tested Applications	ELISA,WB,IHC;WB:1:500-1:3000,IHC:1:50-1:100
Form	Rabbit IgG in phosphate buffered saline (without Mg ²⁺ and Ca ²⁺), pH 7.4, 150mM NaCl, 0.02% sodium azide and 50% glycerol.
Purification Method	The antibody was affinity-purified from rabbit antiserum by affinity-chromatography using epitope-specific immunogen.
Clonality	Polyclonal
Alias	Keratin type I cytoskeletal 16; Cytokeratin-16; CK-16; K16;
Product Type	Polyclonal Antibody
Immunogen Species	Homo sapiens (Human)
Target Names	KRT16

Image



Western blot analysis of extracts from HepG2 cells, using Keratin 16 antibody.



Immunohistochemical analysis of paraffin-embedded human breast carcinoma tissue using Keratin 16 antibody.