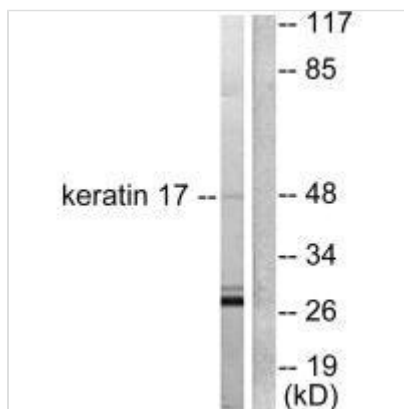




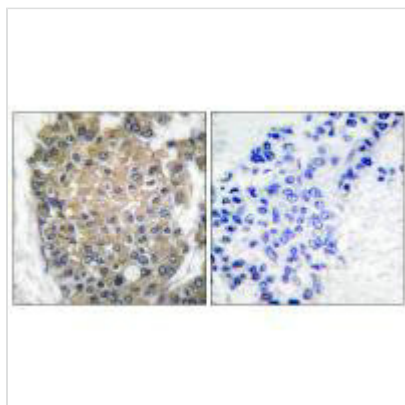
# KRT17 Antibody

<b>Product Code</b>	CSB-PA442800
<b>Storage</b>	Upon receipt, store at -20°C or -80°C. Avoid repeated freeze.
<b>Uniprot No.</b>	Q04695
<b>Immunogen</b>	Synthesized peptide derived from Human keratin 17.
<b>Raised In</b>	Rabbit
<b>Species Reactivity</b>	Human,Mouse,Rat
<b>Tested Applications</b>	ELISA,WB,IHC,IF;WB:1:500-1:3000,IHC:1:50-1:100,IF:1:100-1:500
<b>Form</b>	Liquid
<b>Storage Buffer</b>	Liquid in PBS containing 50% glycerol, 0.5% BSA and 0.02% sodium azide.
<b>Purification Method</b>	The antibody was affinity-purified from rabbit antiserum by affinity-chromatography using epitope-specific immunogen.
<b>Clonality</b>	Polyclonal
<b>Product Type</b>	Polyclonal Antibody
<b>Immunogen Species</b>	Homo sapiens (Human)
<b>Target Names</b>	KRT17

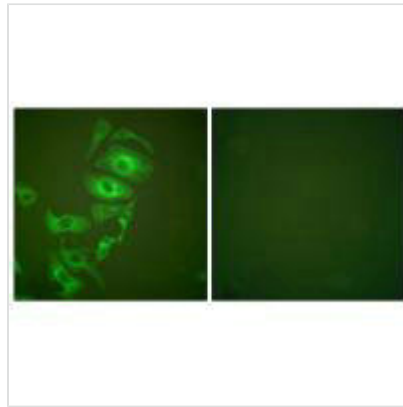
## Image



Western blot analysis of extracts from HuvEc cells, using keratin 17 antibody.



Immunohistochemical analysis of paraffin-embedded human breast carcinoma tissue using keratin 17 antibody.



Immunofluorescence analysis of HepG2 cells, using keratin 17 antibody.

---

**Usage**

For Research Use Only. Not for use in diagnostic or therapeutic procedures.