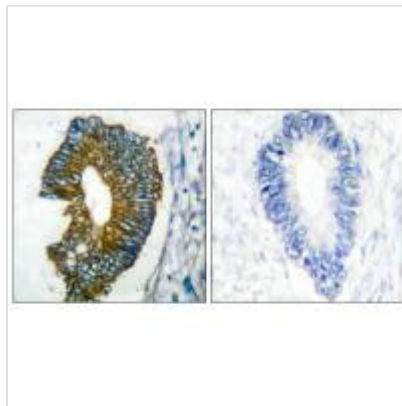




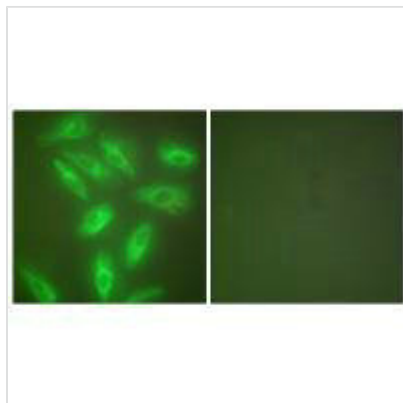
KRT18 Antibody

Product Code	CSB-PA005823
Storage	Upon receipt, store at -20°C or -80°C. Avoid repeated freeze.
Uniprot No.	P05783
Immunogen	Synthesized peptide derived from Human Keratin 18.
Raised In	Rabbit
Species Reactivity	Human
Specificity	The antibody detects endogenous levels of total Keratin 18 protein.
Tested Applications	ELISA,WB,IHC,IF;WB:1:500-1:3000,IHC:1:50-1:100,IF:1:100-1:500
Form	Rabbit IgG in phosphate buffered saline (without Mg ²⁺ and Ca ²⁺), pH 7.4, 150mM NaCl, 0.02% sodium azide and 50% glycerol.
Purification Method	The antibody was affinity-purified from rabbit antiserum by affinity-chromatography using epitope-specific immunogen.
Clonality	Polyclonal
Alias	Keratin type I cytoskeletal 18; Cytokeratin-18; CK-18 K18;
Product Type	Polyclonal Antibody
Immunogen Species	Homo sapiens (Human)
Target Names	KRT18

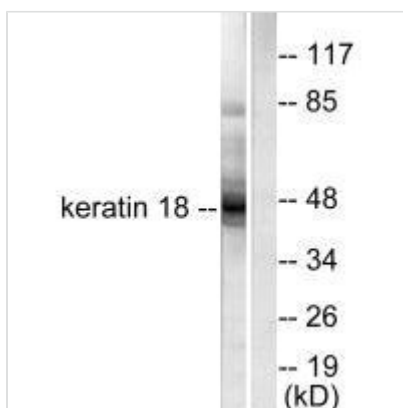
Image



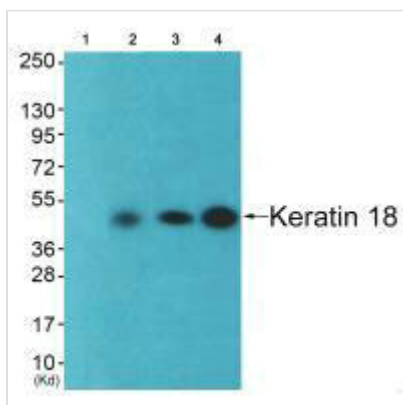
Immunohistochemical analysis of paraffin-embedded human lung carcinoma tissue using Keratin 18 antibody.



Immunofluorescence analysis of HeLa cells, using Keratin 18 antibody.



Western blot analysis of extracts from HeLa cells, using Keratin 18 antibody.



Western blot analysis of extracts from 293 cells (Lane 2), CoLo cells (Lane 3) and HepG2 cells (Lane 4), using Keratin 18 antibody. The lane on the left is treated with synthesized peptide.

Usage

For Research Use Only. Not for use in diagnostic or therapeutic procedures.