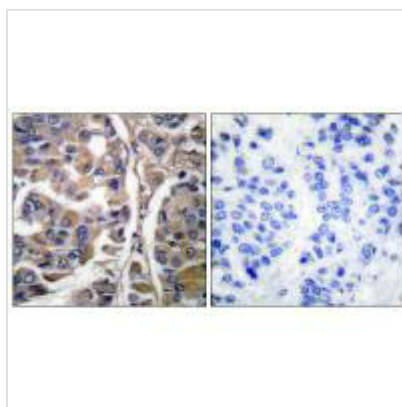




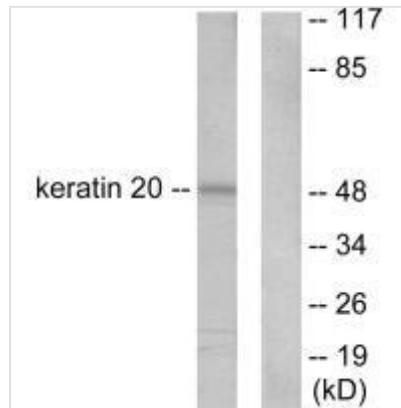
# KRT20 Antibody

<b>Product Code</b>	CSB-PA032909
<b>Storage</b>	Upon receipt, store at -20°C or -80°C. Avoid repeated freeze.
<b>Uniprot No.</b>	P35900
<b>Immunogen</b>	Synthesized peptide derived from Human Keratin 20.
<b>Raised In</b>	Rabbit
<b>Species Reactivity</b>	Human,Mouse,Rat
<b>Specificity</b>	The antibody detects endogenous levels of total Keratin 20 protein.
<b>Tested Applications</b>	ELISA,WB,IHC;WB:1:500-1:3000,IHC:1:50-1:100
<b>Form</b>	Rabbit IgG in phosphate buffered saline (without Mg <sup>2+</sup> and Ca <sup>2+</sup> ), pH 7.4, 150mM NaCl, 0.02% sodium azide and 50% glycerol.
<b>Purification Method</b>	The antibody was affinity-purified from rabbit antiserum by affinity-chromatography using epitope-specific immunogen.
<b>Clonality</b>	Polyclonal
<b>Alias</b>	Keratin type I cytoskeletal 20; Cytokeratin-20; CK-20; K20;
<b>Product Type</b>	Polyclonal Antibody
<b>Immunogen Species</b>	Homo sapiens (Human)
<b>Target Names</b>	KRT20

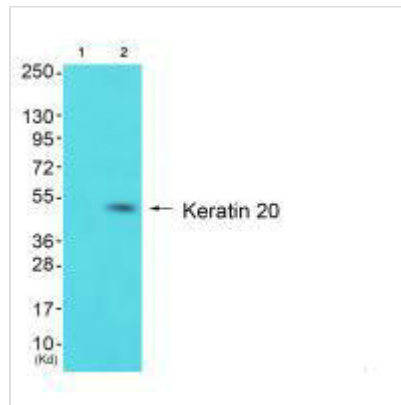
## Image



Immunohistochemical analysis of paraffin-embedded human breast carcinoma tissue using Keratin 20 antibody.



Western blot analysis of extracts from HeLa cells, using Keratin 20 antibody.



Western blot analysis of extracts from HepG2 cells (Lane 2), using Keratin 20 antibody. The lane on the left is treated with synthesized peptide.