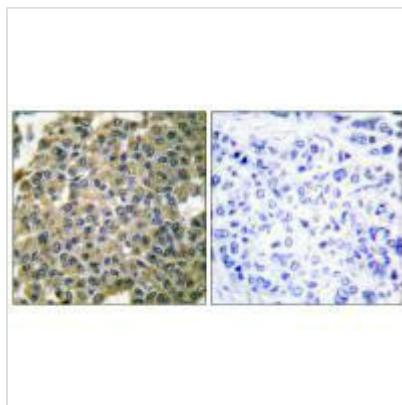




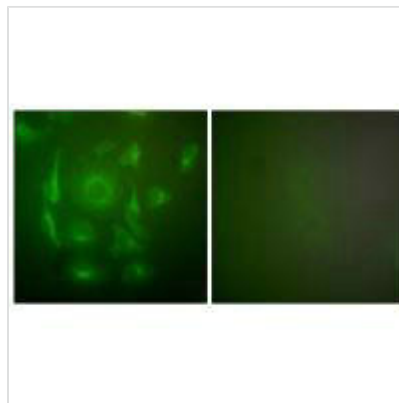
KRT7 Antibody

Product Code	CSB-PA246431
Storage	Upon receipt, store at -20°C or -80°C. Avoid repeated freeze.
Uniprot No.	P08729
Immunogen	Synthesized peptide derived from Human Keratin 7.
Raised In	Rabbit
Species Reactivity	Human
Specificity	The antibody detects endogenous levels of total Keratin 7 protein.
Tested Applications	ELISA,WB,IHC,IF;WB:1:500-1:3000,IHC:1:50-1:100,IF:1:100-1:500
Form	Rabbit IgG in phosphate buffered saline (without Mg ²⁺ and Ca ²⁺), pH 7.4, 150mM NaCl, 0.02% sodium azide and 50% glycerol.
Purification Method	The antibody was affinity-purified from rabbit antiserum by affinity-chromatography using epitope-specific immunogen.
Clonality	Polyclonal
Alias	Keratin type II cytoskeletal 7; Cytokeratin-7; CK-7; K7; Sarcolectin
Product Type	Polyclonal Antibody
Immunogen Species	Homo sapiens (Human)
Target Names	KRT7

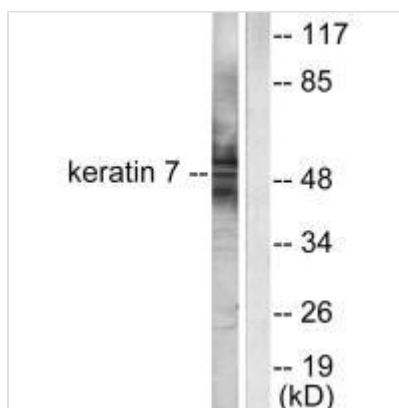
Image



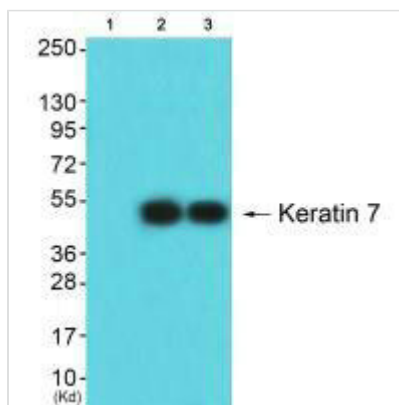
Immunohistochemical analysis of paraffin-embedded human breast carcinoma tissue using Keratin 7 antibody.



Immunofluorescence analysis of HepG2 cells, using Keratin 7 antibody.



Western blot analysis of extracts from HepG2 cells, using Keratin 7 antibody.



Western blot analysis of extracts from HeLa cells (Lane 2) and HepG2 cells (Lane 3), using Keratin 7 antibody. The lane on the left is treated with synthesized peptide.