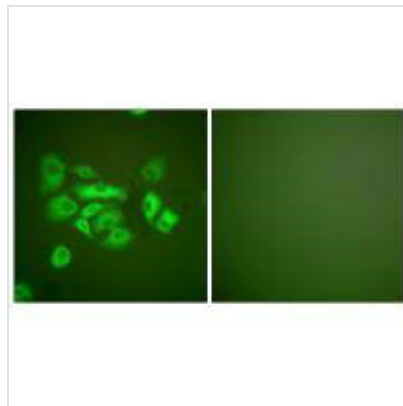




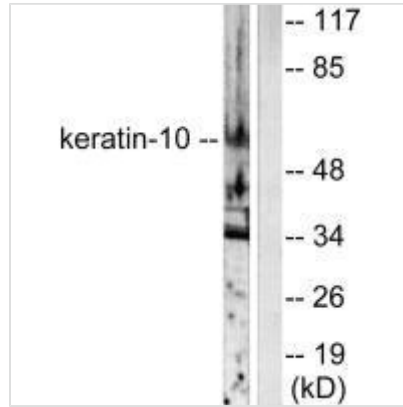
KRT10 Antibody

Product Code	CSB-PA998574
Storage	Upon receipt, store at -20°C or -80°C. Avoid repeated freeze.
Uniprot No.	P13645
Immunogen	Synthesized peptide derived from Human Keratin 10.
Raised In	Rabbit
Species Reactivity	Human,Rat
Specificity	The antibody detects endogenous levels of total Keratin 10 protein.
Tested Applications	ELISA,WB,IF;WB:1:500-1:3000,IF:1:100-1:500
Form	Rabbit IgG in phosphate buffered saline (without Mg ²⁺ and Ca ²⁺), pH 7.4, 150mM NaCl, 0.02% sodium azide and 50% glycerol.
Purification Method	The antibody was affinity-purified from rabbit antiserum by affinity-chromatography using epitope-specific immunogen.
Clonality	Polyclonal
Alias	Keratin type I cytoskeletal 10; Cytokeratin-10; CK-10; K10;
Product Type	Polyclonal Antibody
Immunogen Species	Homo sapiens (Human)
Target Names	KRT10

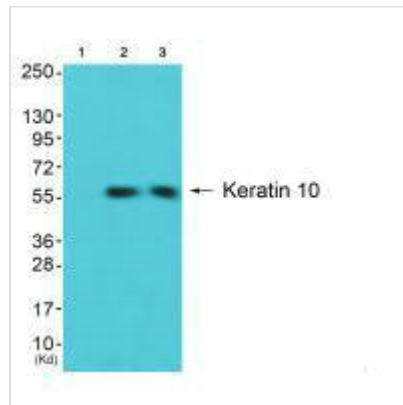
Image



Immunofluorescence analysis of A549 cells, using Keratin 10 antibody.



Western blot analysis of extracts from HeLa cells, using Keratin 10 antibody.



Western blot analysis of extracts from COS7 cells and 3T3 cells using Keratin 10 antibody. The lane on the left is treated with synthesized peptide.

Usage

For Research Use Only. Not for use in diagnostic or therapeutic procedures.