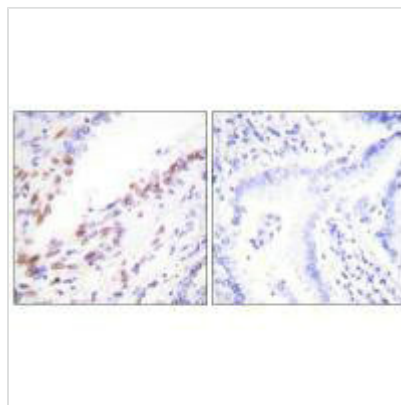




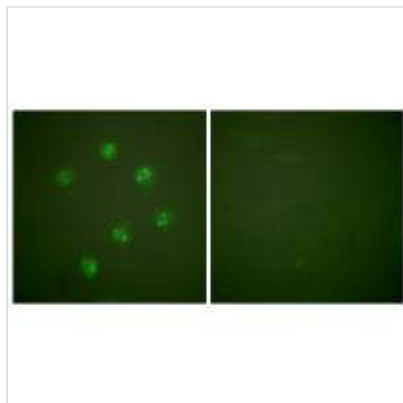
MKI67 Antibody

Product Code	CSB-PA049429
Storage	Upon receipt, store at -20°C or -80°C. Avoid repeated freeze.
Uniprot No.	P46013
Immunogen	Synthesized peptide derived from C-terminal of Human ki67.
Raised In	Rabbit
Species Reactivity	Human
Specificity	The antibody detects endogenous levels of total ki67protein.
Tested Applications	ELISA,IHC,IF;IHC:1:50-1:100,IF:1:100-1:500
Form	Rabbit IgG in phosphate buffered saline (without Mg ²⁺ and Ca ²⁺), pH 7.4, 150mM NaCl, 0.02% sodium azide and 50% glycerol.
Purification Method	The antibody was affinity-purified from rabbit antiserum by affinity-chromatography using epitope-specific immunogen.
Clonality	Polyclonal
Alias	Antigen KI-67; MKI67;
Product Type	Polyclonal Antibody
Immunogen Species	Homo sapiens (Human)
Target Names	MKI67

Image



Immunohistochemistry analysis of paraffin-embedded human lung carcinoma tissue, using Ki67 antibody.



Immunofluorescence analysis of COS7 cells, using Ki67 antibody.

Usage

For Research Use Only. Not for use in diagnostic or therapeutic procedures.