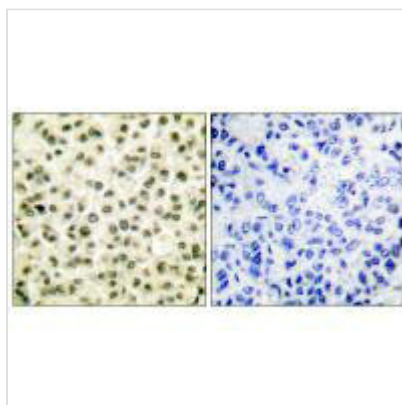




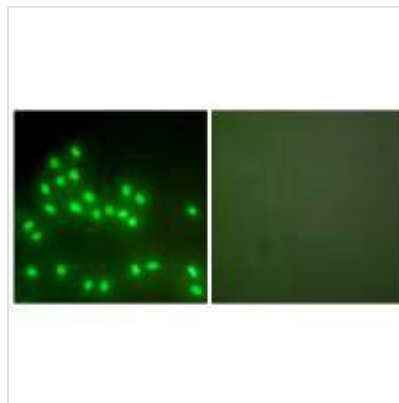
XRCC6/XRCC5 Antibody

Product Code	CSB-PA834315
Storage	Upon receipt, store at -20°C or -80°C. Avoid repeated freeze.
Uniprot No.	P12956
Immunogen	Synthesized peptide derived from Human Ku70/80.
Raised In	Rabbit
Species Reactivity	Human,Mouse,Rat
Specificity	The antibody detects endogenous levels of total Ku70/80 protein.
Tested Applications	ELISA,WB,IHC,IF;WB:1:500-1:3000,IHC:1:50-1:100,IF:1:100-1:500
Form	Rabbit IgG in phosphate buffered saline (without Mg ²⁺ and Ca ²⁺), pH 7.4, 150mM NaCl, 0.02% sodium azide and 50% glycerol.
Purification Method	The antibody was affinity-purified from rabbit antiserum by affinity-chromatography using epitope-specific immunogen.
Clonality	Polyclonal
Alias	86 kDa subunit of Ku antigen; ATP-dependent DNA helicase II; 80 kDa subunit; CTC box binding factor 85 kDa subunit; CTC85
Product Type	Polyclonal Antibody
Immunogen Species	Homo sapiens (Human)
Target Names	XRCC6/XRCC5

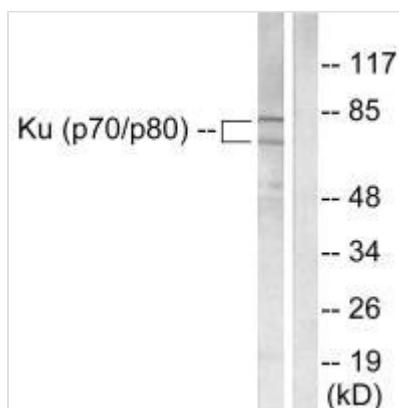
Image



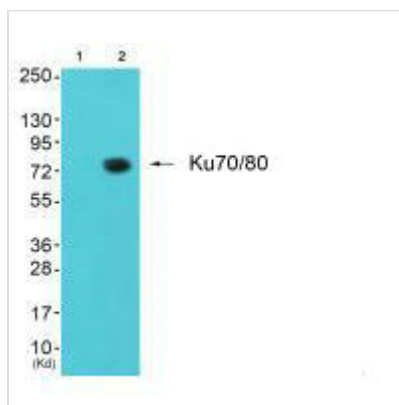
Immunohistochemical analysis of paraffin-embedded human breast carcinoma tissue using Ku70/80 antibody.



Immunofluorescence analysis of A549 cells, using Ku70/80 antibody.



Western blot analysis of extracts from LOVO cells, using Ku70/80 antibody.



Western blot analysis of extracts from JK cells (Lane 2), using Ku80 antibody. The lane on the left is treated with synthesized peptide.