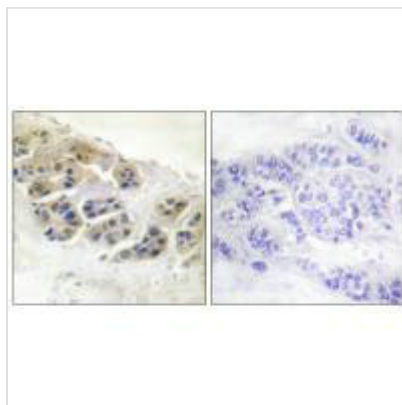




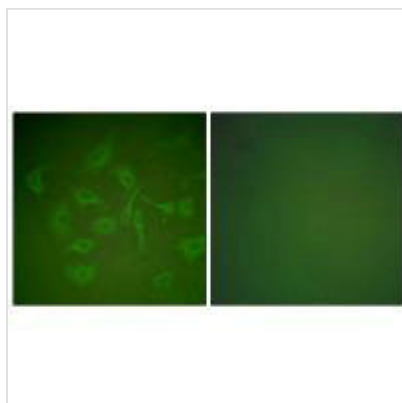
# SCGB2A2 Antibody

|                            |  |
|----------------------------|--|
| <b>Product Code</b>        | CSB-PA293602   |
| <b>Storage</b>             | Upon receipt, store at -20°C or -80°C. Avoid repeated freeze.  |
| <b>Uniprot No.</b>         | Q13296   |
| <b>Immunogen</b>           | Synthesized peptide derived from Human mammaglobin .   |
| <b>Raised In</b>           | Rabbit   |
| <b>Species Reactivity</b>  | Human,Rat  |
| <b>Specificity</b>         | The antibody detects endogenous levels of total mammaglobin protein.   |
| <b>Tested Applications</b> | ELISA,WB,IHC,IF;WB:1:500-1:3000,IHC:1:50-1:100,IF:1:100-1:500  |
| <b>Form</b>                | Rabbit IgG in phosphate buffered saline (without Mg <sup>2+</sup> and Ca <sup>2+</sup> ), pH 7.4, 150mM NaCl, 0.02% sodium azide and 50% glycerol. |
| <b>Purification Method</b> | The antibody was affinity-purified from rabbit antiserum by affinity-chromatography using epitope-specific immunogen.                              |
| <b>Clonality</b>           | Polyclonal   |
| <b>Alias</b>               | MGB1; MAMMAGLOBIN 1; secretoglobin; family 2A; member 2  |
| <b>Product Type</b>        | Polyclonal Antibody  |
| <b>Immunogen Species</b>   | Homo sapiens (Human)   |
| <b>Target Names</b>        | SCGB2A2  |

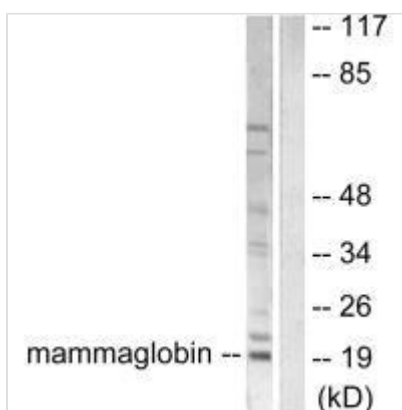
## Image



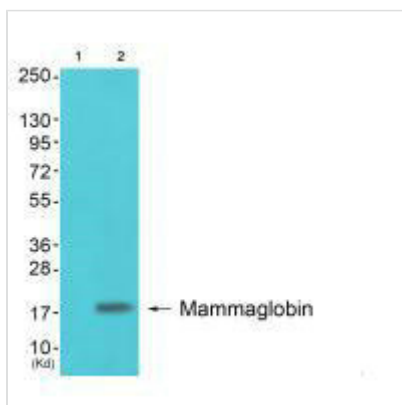
Immunohistochemistry analysis of paraffin-embedded human breast carcinoma tissue using Mammaglobin antibody.



Immunofluorescence analysis of HepG2 cells, using Mammaglobin antibody.



Western blot analysis of extracts from HepG2 cells, using Mammaglobin antibody.



Western blot analysis of extracts from colo cells (Lane 2), using Mammaglobin antibody. The lane on the left is treated with synthesized peptide.