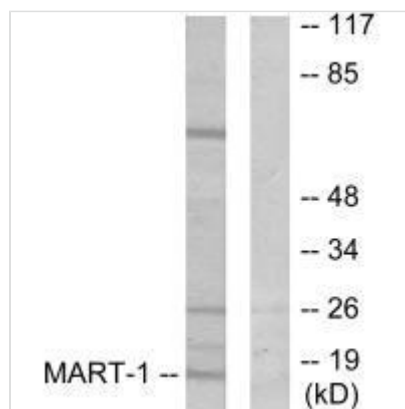




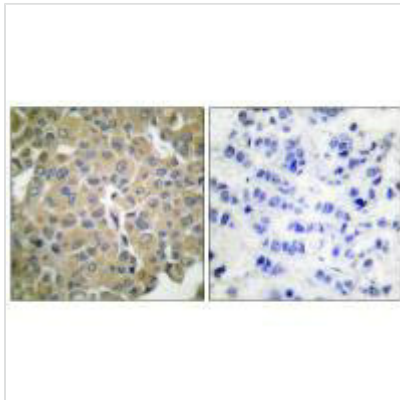
MLANA Antibody

Product Code	CSB-PA998735
Storage	Upon receipt, store at -20°C or -80°C. Avoid repeated freeze.
Uniprot No.	Q16655
Immunogen	Synthesized peptide derived from Human MART-1.
Raised In	Rabbit
Species Reactivity	Human
Specificity	The antibody detects endogenous levels of total MART-1 protein.
Tested Applications	ELISA,WB,IHC;WB:1:500-1:3000,IHC:1:50-1:100
Form	Rabbit IgG in phosphate buffered saline (without Mg ²⁺ and Ca ²⁺), pH 7.4, 150mM NaCl, 0.02% sodium azide and 50% glycerol.
Purification Method	The antibody was affinity-purified from rabbit antiserum by affinity-chromatography using epitope-specific immunogen.
Clonality	Polyclonal
Alias	MART-1; MART1; melan-A; MELAN A; MELANOMA ANTIGEN RECOGNIZED BY T CELLS 1
Product Type	Polyclonal Antibody
Immunogen Species	Homo sapiens (Human)
Target Names	MLANA

Image



Western blot analysis of extracts from NIH/3T3 cells, using MART-1 antibody.



Immunohistochemical analysis of paraffin-embedded human breast carcinoma tissue using MART-1 antibody.