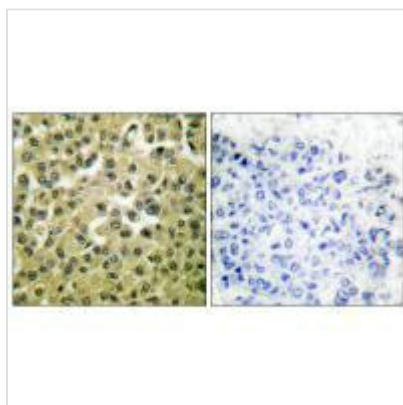




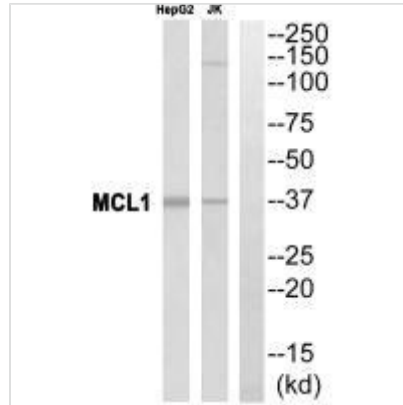
MCL1 Antibody

Product Code	CSB-PA787977
Storage	Upon receipt, store at -20°C or -80°C. Avoid repeated freeze.
Uniprot No.	Q07820
Immunogen	Synthesized peptide derived from Human MCL1.
Raised In	Rabbit
Species Reactivity	Human,Mouse,Rat
Specificity	The antibody detects endogenous levels of total MCL1 protein.
Tested Applications	ELISA,WB,IHC;WB:1:500-1:3000,IHC:1:50-1:100
Form	Rabbit IgG in phosphate buffered saline (without Mg ²⁺ and Ca ²⁺), pH 7.4, 150mM NaCl, 0.02% sodium azide and 50% glycerol.
Purification Method	The antibody was affinity-purified from rabbit antiserum by affinity-chromatography using epitope-specific immunogen.
Clonality	Polyclonal
Alias	EAT/MCL-1 protein; Induced myeloid leukemia cell differentiation protein Mcl-1; Myeloid cell leukemia sequence 1.;
Product Type	Polyclonal Antibody
Immunogen Species	Homo sapiens (Human)
Target Names	MCL1

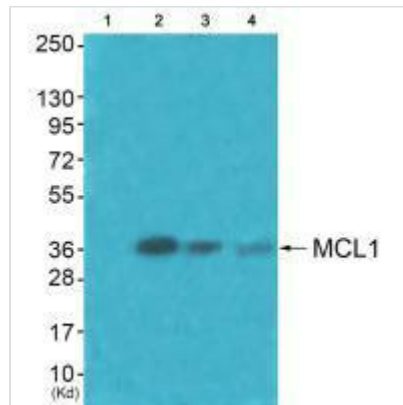
Image



Immunohistochemical analysis of paraffin-embedded human breast carcinoma tissue using MCL1 antibody.



Western blot analysis of extracts from HuvEc cells, using MCL1 antibody.



Western blot analysis of extracts from HuvEc cells (Lane 2), JK cells (Lane 3) and cos-7 cells (Lane 4), using MCL1 antibody. The lane on the left is treated with synthesized peptide.

Usage

For Research Use Only. Not for use in diagnostic or therapeutic procedures.