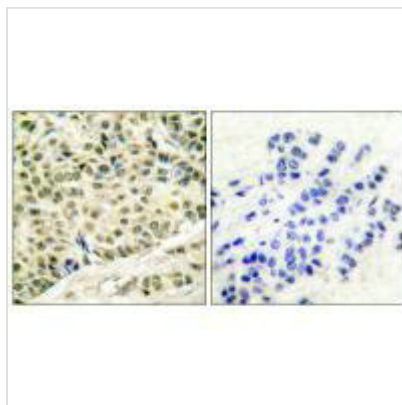




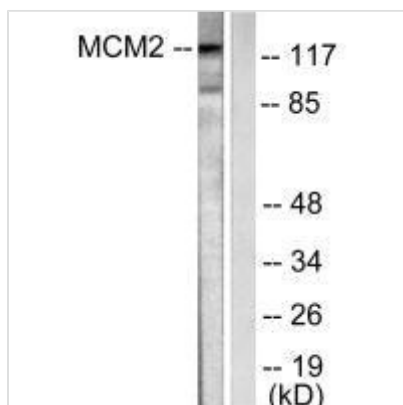
MCM2 Antibody

Product Code	CSB-PA016903
Storage	Upon receipt, store at -20°C or -80°C. Avoid repeated freeze.
Uniprot No.	P49736
Immunogen	Synthesized peptide derived from Human MCM2.
Raised In	Rabbit
Species Reactivity	Human,Mouse,Rat
Specificity	The antibody detects endogenous levels of total MCM2 protein.
Tested Applications	ELISA,WB,IHC;WB:1:500-1:3000,IHC:1:50-1:100
Form	Rabbit IgG in phosphate buffered saline (without Mg ²⁺ and Ca ²⁺), pH 7.4, 150mM NaCl, 0.02% sodium azide and 50% glycerol.
Purification Method	The antibody was affinity-purified from rabbit antiserum by affinity-chromatography using epitope-specific immunogen.
Clonality	Polyclonal
Alias	BM28; CDCL1; DNA replication licensing factor MCM2; KIAA0030; MCMD2
Product Type	Polyclonal Antibody
Immunogen Species	Homo sapiens (Human)
Target Names	MCM2

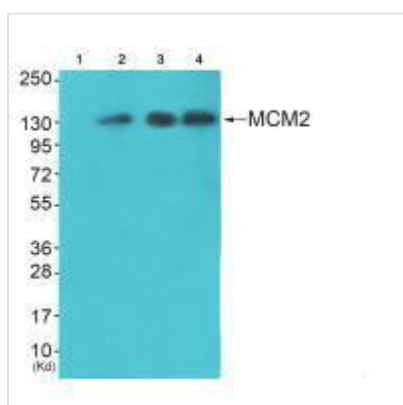
Image



Immunohistochemical analysis of paraffin-embedded human breast carcinoma tissue using MCM2 antibody.



Western blot analysis of extracts from 293 cells, using MCM2 antibody.



Western blot analysis of extracts from 3T3 cells (Lane 2), k562 cells (Lane 3) and HepG2 cells (Lane 4), using MCM2 antibody. The lane on the left is treated with synthesized peptide.