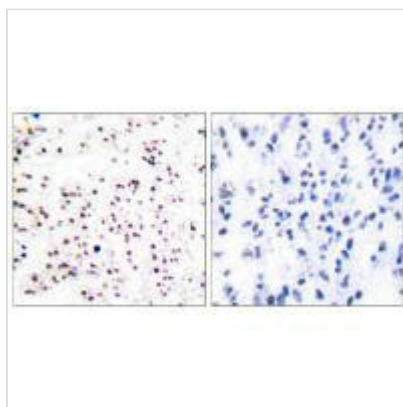




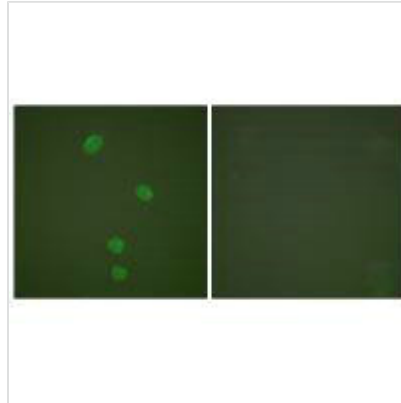
# MCM5 Antibody

<b>Product Code</b>	CSB-PA920054
<b>Storage</b>	Upon receipt, store at -20°C or -80°C. Avoid repeated freeze.
<b>Uniprot No.</b>	P33992
<b>Immunogen</b>	Synthesized peptide derived from Human MCM5 antibody.
<b>Raised In</b>	Rabbit
<b>Species Reactivity</b>	Human,Mouse,Rat
<b>Specificity</b>	The antibody detects endogenous levels of total MCM5 protein.
<b>Tested Applications</b>	ELISA,WB,IHC,IF;WB:1:500-1:3000,IHC:1:50-1:100,IF:1:100-1:500
<b>Form</b>	Rabbit IgG in phosphate buffered saline (without Mg <sup>2+</sup> and Ca <sup>2+</sup> ), pH 7.4, 150mM NaCl, 0.02% sodium azide and 50% glycerol.
<b>Purification Method</b>	The antibody was affinity-purified from rabbit antiserum by affinity-chromatography using epitope-specific immunogen.
<b>Clonality</b>	Polyclonal
<b>Alias</b>	CDC46; DNA replication licensing factor MCM5; minichromosome maintenance deficient protein 5;
<b>Product Type</b>	Polyclonal Antibody
<b>Immunogen Species</b>	Homo sapiens (Human)
<b>Target Names</b>	MCM5

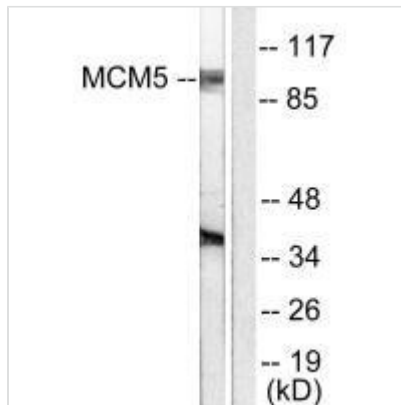
## Image



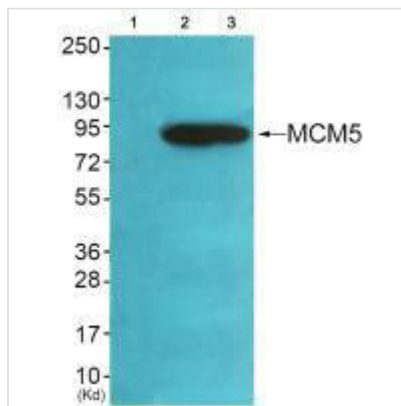
Immunohistochemical analysis of paraffin-embedded human tonsil tissue using MCM5 antibody.



Immunofluorescence analysis of HepG2 cells, using MCM5 antibody.



Western blot analysis of extracts from HepG2 cells, using MCM5 antibody.



Western blot analysis of extracts from HeLa cells (Lane 2), A549 cells (Lane 3) and cells (Lane 4), using MCM5 antibody. The lane on the left is treated with synthesized peptide.

**Usage**

For Research Use Only. Not for use in diagnostic or therapeutic procedures.