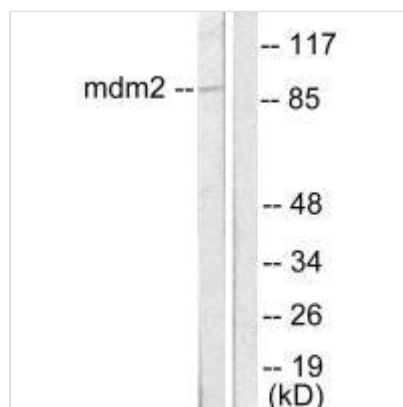




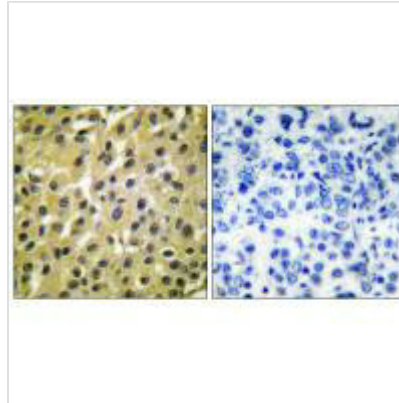
MDM2 Antibody

Product Code	CSB-PA891046
Storage	Upon receipt, store at -20°C or -80°C. Avoid repeated freeze.
Uniprot No.	Q00987
Immunogen	Synthesized peptide derived from Human MDM2.
Raised In	Rabbit
Species Reactivity	Human,Rat
Specificity	The antibody detects endogenous levels of total MDM2 protein.
Tested Applications	ELISA,WB,IHC,IF;WB:1:500-1:3000,IHC:1:50-1:100,IF:1:100-1:500
Form	Rabbit IgG in phosphate buffered saline (without Mg ²⁺ and Ca ²⁺), pH 7.4, 150mM NaCl, 0.02% sodium azide and 50% glycerol.
Purification Method	The antibody was affinity-purified from rabbit antiserum by affinity-chromatography using epitope-specific immunogen.
Clonality	Polyclonal
Alias	Double minute 2 protein; double minute 2; human homolog of; E3 ubiquitin-protein ligase Mdm2; Hdm2
Product Type	Polyclonal Antibody
Immunogen Species	Homo sapiens (Human)
Target Names	MDM2

Image



Western blot analysis of extracts from SKOV3 cells, using MDM2 antibody.



Immunohistochemical analysis of paraffin-embedded human breast carcinoma tissue using MDM2 antibody.



Immunofluorescence analysis of A549 cells, using MDM2 antibody.

Usage

For Research Use Only. Not for use in diagnostic or therapeutic procedures.