



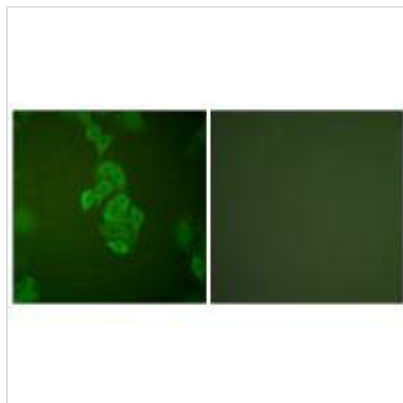
ENO2 Antibody

Product Code	CSB-PA790690
Storage	Upon receipt, store at -20°C or -80°C. Avoid repeated freeze.
Uniprot No.	P09104
Immunogen	Synthesized peptide derived from Human NSE.
Raised In	Rabbit
Species Reactivity	Human, Mouse
Specificity	The antibody detects endogenous levels of total NSE protein.
Tested Applications	ELISA, WB, IHC, IF; WB: 1:500-1:3000, IHC: 1:50-1:100, IF: 1:100-1:500
Form	Rabbit IgG in phosphate buffered saline (without Mg ²⁺ and Ca ²⁺), pH 7.4, 150mM NaCl, 0.02% sodium azide and 50% glycerol.
Purification Method	The antibody was affinity-purified from rabbit antiserum by affinity-chromatography using epitope-specific immunogen.
Clonality	Polyclonal
Alias	2-phospho-D-glycerate hydro-lyase; ENOG; Enolase 2; Gamma enolase; Neural enolase
Product Type	Polyclonal Antibody
Immunogen Species	Homo sapiens (Human)
Target Names	ENO2

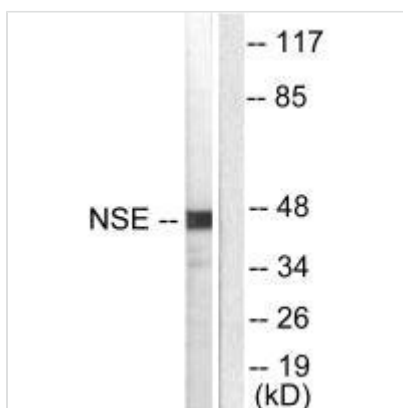
Image



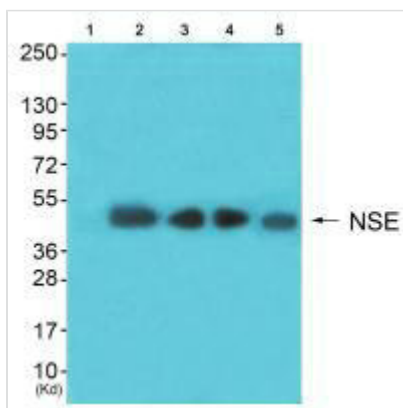
Immunohistochemical analysis of paraffin-embedded human brain tissue using NSE antibody.



Immunofluorescence analysis of A549 cells, using NSE antibody.



Western blot analysis of extracts from HepG2 cells, using NSE antibody.



Western blot analysis of extracts from Hela cells (Lane 2), colo cells(Lane 3)lbnotHepG2 cells(Lane 4) and 293 cells (Lane 5), using NSE antibody. The lane on the left is treated with synthesized peptide.

Usage

For Research Use Only. Not for use in diagnostic or therapeutic procedures.