



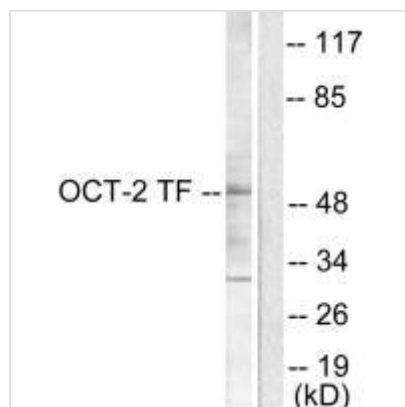
POU2F2 Antibody

Product Code	CSB-PA575296
Storage	Upon receipt, store at -20°C or -80°C. Avoid repeated freeze.
Uniprot No.	P09086
Immunogen	Synthesized peptide derived from Human OCT2 antibody.
Raised In	Rabbit
Species Reactivity	Human,Mouse,Rat
Specificity	The antibody detects endogenous levels of total OCT2 protein.
Tested Applications	ELISA,WB,IF;WB:1:500-1:3000,IF:1:100-1:500
Form	Rabbit IgG in phosphate buffered saline (without Mg ²⁺ and Ca ²⁺), pH 7.4, 150mM NaCl, 0.02% sodium azide and 50% glycerol.
Purification Method	The antibody was affinity-purified from rabbit antiserum by affinity-chromatography using epitope-specific immunogen.
Clonality	Polyclonal
Alias	41914; OTF2; OCTAMER-BINDING TRANSCRIPTION FACTOR 2; OTF LYMPHOID-SPECIFIC 2;
Product Type	Polyclonal Antibody
Immunogen Species	Homo sapiens (Human)
Target Names	POU2F2

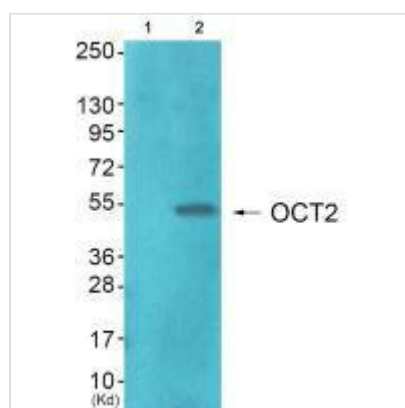
Image



Immunofluorescence analysis of COS7 cells, using OCT2 antibody.



Western blot analysis of extracts from COS7 cells, using OCT2 antibody.



Western blot analysis of extracts from JK cells (Lane 2), using OCT2 antibody. The lane on the left is treated with synthesized peptide.