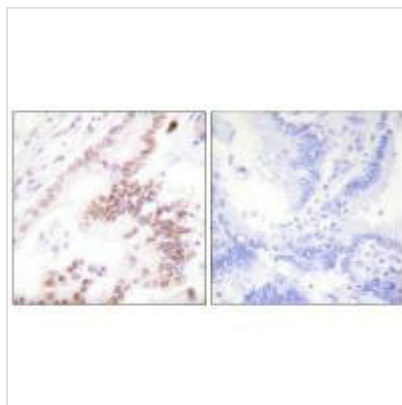




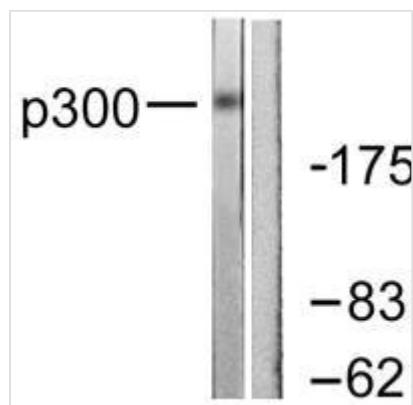
EP300 Antibody

Product Code	CSB-PA790542
Storage	Upon receipt, store at -20°C or -80°C. Avoid repeated freeze.
Uniprot No.	Q09472
Immunogen	Synthesized peptide derived from N-terminal of Human p300.
Raised In	Rabbit
Species Reactivity	Human
Specificity	The antibody detects endogenous levels of total p300 protein.
Tested Applications	ELISA, WB, IHC; WB:1:500-1:3000, IHC:1:50-1:100
Form	Rabbit IgG in phosphate buffered saline (without Mg ²⁺ and Ca ²⁺), pH 7.4, 150mM NaCl, 0.02% sodium azide and 50% glycerol.
Purification Method	The antibody was affinity-purified from rabbit antiserum by affinity-chromatography using epitope-specific immunogen.
Clonality	Polyclonal
Alias	E1A-associated protein p300; EP300; P300 transcription coactivator homolog;
Product Type	Polyclonal Antibody
Immunogen Species	Homo sapiens (Human)
Target Names	EP300

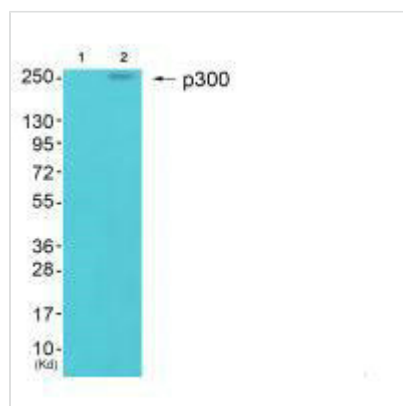
Image



Immunohistochemistry analysis of paraffin-embedded human lung carcinoma tissue using p300 antibody.



Western blot analysis of extracts from MDA-MB-435 cells, using p300 antibody.



Western blot analysis of extracts from HepG2 cells (Lane 2), using p300 antibody. The lane on the left is treated with synthesized peptide.