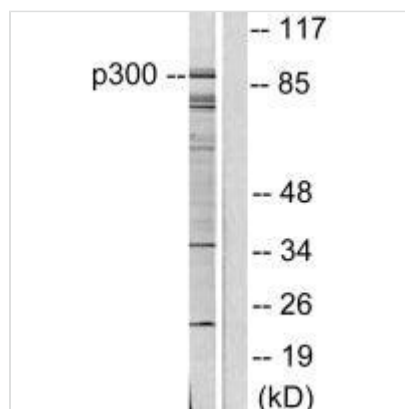




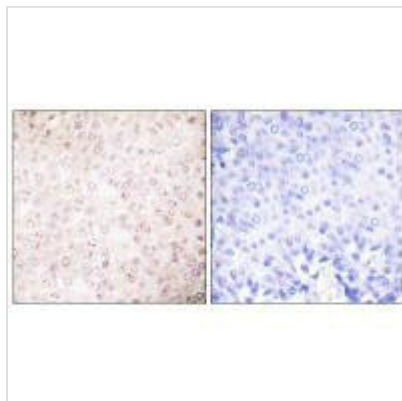
EP300/CREBBP Antibody

Product Code	CSB-PA265859
Storage	Upon receipt, store at -20°C or -80°C. Avoid repeated freeze.
Uniprot No.	Q09472
Immunogen	Synthesized peptide derived from Human P300/CBP.
Raised In	Rabbit
Species Reactivity	Human,Mouse,Rat
Specificity	The antibody detects endogenous levels of total P300/CBP protein.
Tested Applications	ELISA,WB,IHC;WB:1:500-1:3000,IHC:1:50-1:100
Form	Rabbit IgG in phosphate buffered saline (without Mg ²⁺ and Ca ²⁺), pH 7.4, 150mM NaCl, 0.02% sodium azide and 50% glycerol.
Purification Method	The antibody was affinity-purified from rabbit antiserum by affinity-chromatography using epitope-specific immunogen.
Clonality	Polyclonal
Alias	CREB-binding protein; CREBBP E1A-associated protein p300; EP300; P300 transcription coactivator homolog;
Product Type	Polyclonal Antibody
Immunogen Species	Homo sapiens (Human)
Target Names	EP300/CREBBP

Image



Western blot analysis of extracts from COLO205 cells, using P300/CBP antibody.



Immunohistochemical analysis of paraffin-embedded human breast carcinoma tissue using P300/CBP antibody.