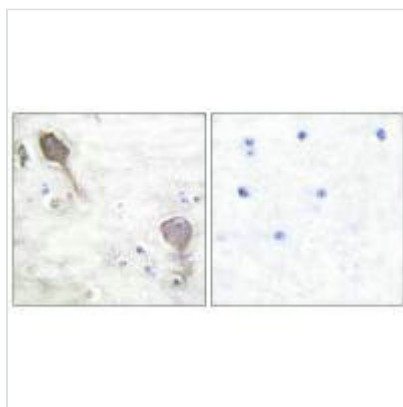




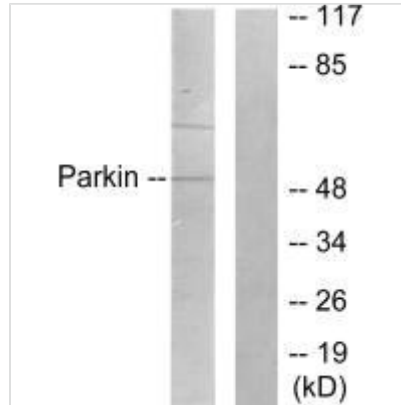
# PARK2 Antibody

<b>Product Code</b>	CSB-PA076233
<b>Storage</b>	Upon receipt, store at -20°C or -80°C. Avoid repeated freeze.
<b>Uniprot No.</b>	O60260
<b>Immunogen</b>	Synthesized peptide derived from Human Parkin antibody.
<b>Raised In</b>	Rabbit
<b>Species Reactivity</b>	Human,Mouse,Rat
<b>Specificity</b>	The antibody detects endogenous levels of total Parkin protein.
<b>Tested Applications</b>	ELISA,WB,IHC;WB:1:500-1:3000,IHC:1:50-1:100
<b>Form</b>	Rabbit IgG in phosphate buffered saline (without Mg <sup>2+</sup> and Ca <sup>2+</sup> ), pH 7.4, 150mM NaCl, 0.02% sodium azide and 50% glycerol.
<b>Purification Method</b>	The antibody was affinity-purified from rabbit antiserum by affinity-chromatography using epitope-specific immunogen.
<b>Clonality</b>	Polyclonal
<b>Alias</b>	PARK2; PRKN; PRKN2; Parkinson disease protein 2; Parkinson juvenile disease protein 2
<b>Product Type</b>	Polyclonal Antibody
<b>Immunogen Species</b>	Homo sapiens (Human)
<b>Target Names</b>	PRKN

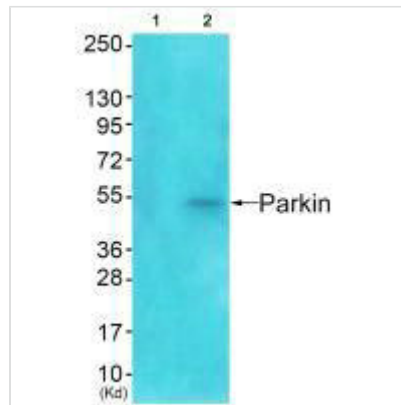
## Image



Immunohistochemical analysis of paraffin-embedded human brain tissue using Parkin antibody.



Western blot analysis of extracts from Jurkat cells, using Parkin antibody.



Western blot analysis of extracts from Jurkat cells using Parkin antibody. The lane on the left is treated with synthesized peptide.

## Usage

For Research Use Only. Not for use in diagnostic or therapeutic procedures.