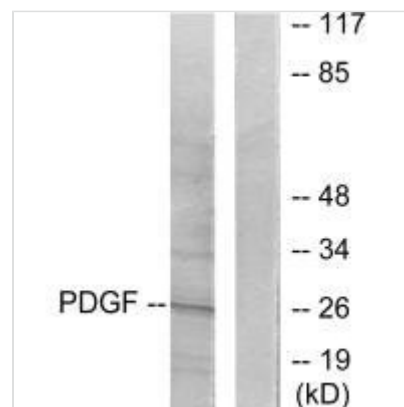




PDGFB Antibody

Product Code	CSB-PA153276
Storage	Upon receipt, store at -20°C or -80°C. Avoid repeated freeze.
Uniprot No.	P01127
Immunogen	Synthesized peptide derived from Human PDGFB.
Raised In	Rabbit
Species Reactivity	Human, Mouse, Rat
Specificity	The antibody detects endogenous levels of total PDGFB protein.
Tested Applications	ELISA, WB; WB: 1:500-1:3000
Form	Rabbit IgG in phosphate buffered saline (without Mg ²⁺ and Ca ²⁺), pH 7.4, 150mM NaCl, 0.02% sodium azide and 50% glycerol.
Purification Method	The antibody was affinity-purified from rabbit antiserum by affinity-chromatography using epitope-specific immunogen.
Clonality	Polyclonal
Alias	PDGF2; ONCOGENE SIS; PDGF B CHAIN; PLATELET-DERIVED GROWTH FACTOR B CHAIN; SIMIAN SARCOMA VIRAL ONCOGENE HOMOLOG
Product Type	Polyclonal Antibody
Immunogen Species	Homo sapiens (Human)
Target Names	PDGFB

Image



Western blot analysis of extracts from NIH/3T3 cells, using PDGFB antibody.