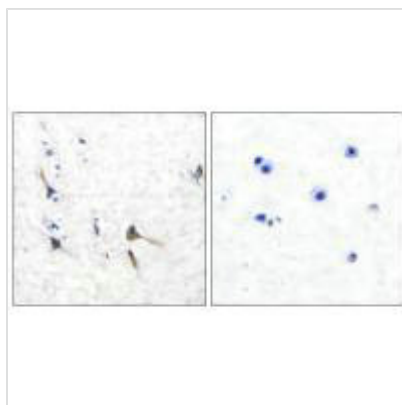




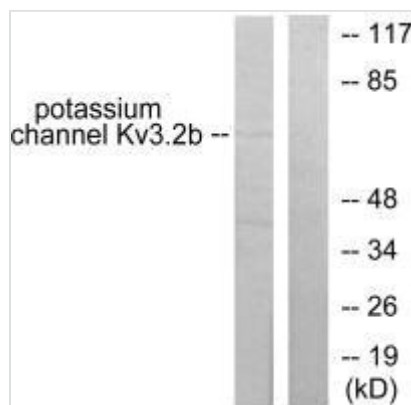
KCNC2 Antibody

Product Code	CSB-PA616429
Storage	Upon receipt, store at -20°C or -80°C. Avoid repeated freeze.
Uniprot No.	Q96PR1
Immunogen	Synthesized peptide derived from Human Potassium Channel Kv3.
Raised In	Rabbit
Species Reactivity	Human,Mouse,Rat
Specificity	The antibody detects endogenous levels of total Potassium Channel Kv3.2b protein.
Tested Applications	ELISA,WB,IHC,IF;WB:1:500-1:3000,IHC:1:50-1:100,IF:1:100-1:500
Form	Rabbit IgG in phosphate buffered saline (without Mg ²⁺ and Ca ²⁺), pH 7.4, 150mM NaCl, 0.02% sodium azide and 50% glycerol.
Purification Method	The antibody was affinity-purified from rabbit antiserum by affinity-chromatography using epitope-specific immunogen.
Clonality	Polyclonal
Alias	POTASSIUM CHANNEL; VOLTAGE-GATED; SHAW-RELATED SUBFAMILY; MEMBER 2;
Product Type	Polyclonal Antibody
Immunogen Species	Homo sapiens (Human)
Target Names	KCNC2

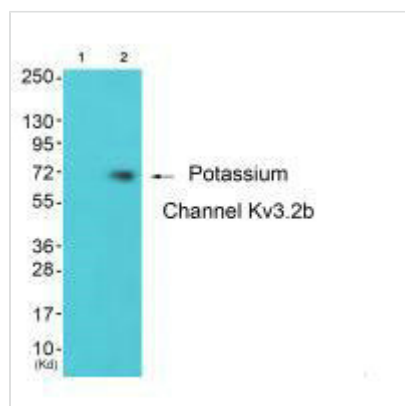
Image



Immunohistochemical analysis of paraffin-embedded human brain tissue using Potassium Channel Kv3.2b antibody.



Western blot analysis of extracts from HepG2 cells, using Potassium Channel Kv3.2b antibody.



Western blot analysis of extracts from 293 cells (Lane 2), using Potassium Channel Kv3.2b antibody. The lane on the left is treated with synthesized peptide.