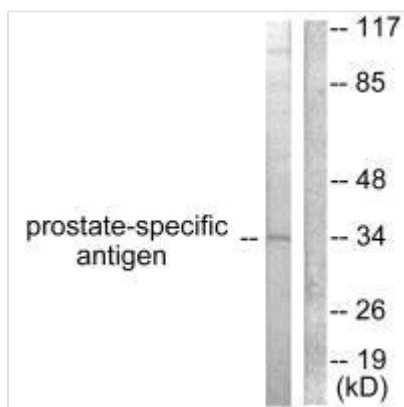




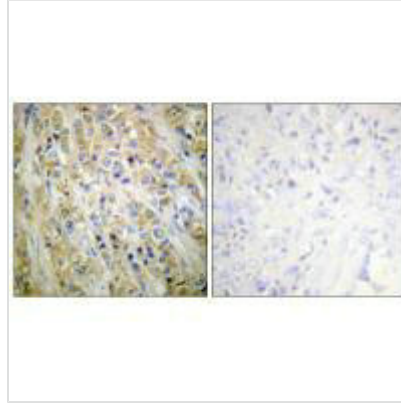
KLK3 Antibody

Product Code	CSB-PA697334
Storage	Upon receipt, store at -20°C or -80°C. Avoid repeated freeze.
Uniprot No.	P07288
Immunogen	Synthesized peptide derived from Human prostate-specific Antigen.
Raised In	Rabbit
Species Reactivity	Human,Mouse
Specificity	The antibody detects endogenous levels of total prostate-specific Antigen protein.
Tested Applications	ELISA,WB,IHC;WB:1:500-1:3000,IHC:1:50-1:100
Form	Rabbit IgG in phosphate buffered saline (without Mg ²⁺ and Ca ²⁺), pH 7.4, 150mM NaCl, 0.02% sodium azide and 50% glycerol.
Purification Method	The antibody was affinity-purified from rabbit antiserum by affinity-chromatography using epitope-specific immunogen.
Clonality	Polyclonal
Alias	3.4.21.77; APS; KLK2A1; PSA; gamma-seminoprotein
Product Type	Polyclonal Antibody
Immunogen Species	Homo sapiens (Human)
Target Names	KLK3

Image



Western blot analysis of extracts from mouse heart, using Prostate-specific Antigen antibody.



Immunohistochemical analysis of paraffin-embedded human prostate carcinoma tissue using Prostate-specific Antigen antibody.

Usage

For Research Use Only. Not for use in diagnostic or therapeutic procedures.