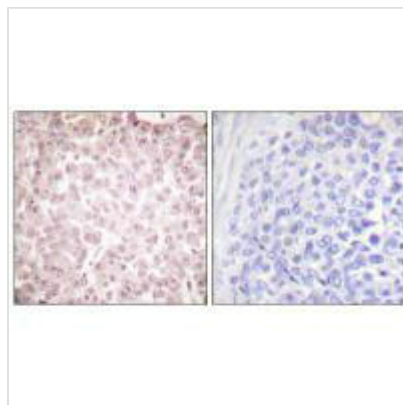




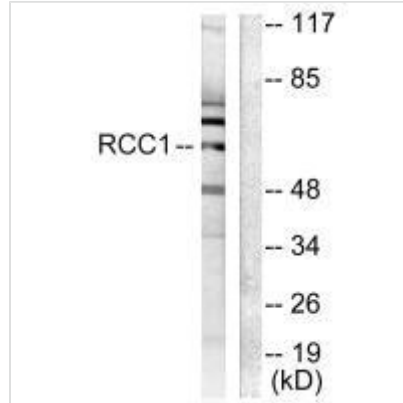
RCC1 Antibody

Product Code	CSB-PA068328
Storage	Upon receipt, store at -20°C or -80°C. Avoid repeated freeze.
Uniprot No.	P18754
Immunogen	Synthesized peptide derived from Human RCC1.
Raised In	Rabbit
Species Reactivity	Human
Specificity	The antibody detects endogenous levels of total RCC1 protein.
Tested Applications	ELISA,WB,IHC;WB:1:500-1:3000,IHC:1:50-1:100
Form	Rabbit IgG in phosphate buffered saline (without Mg ²⁺ and Ca ²⁺), pH 7.4, 150mM NaCl, 0.02% sodium azide and 50% glycerol.
Purification Method	The antibody was affinity-purified from rabbit antiserum by affinity-chromatography using epitope-specific immunogen.
Clonality	Polyclonal
Alias	CHC1; Cell cycle regulatory protein; Regulator of chromosome condensation;
Product Type	Polyclonal Antibody
Immunogen Species	Homo sapiens (Human)
Target Names	RCC1

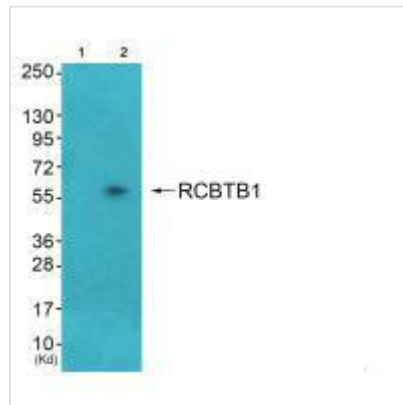
Image



Immunohistochemical analysis of paraffin-embedded human breast carcinoma tissue using RCC1 antibody.



Western blot analysis of extracts from LOVO cells, using RCC1 antibody.



Western blot analysis of extracts from HepG2 cells (Lane 2), cells (Lane 3) and cells (Lane 4), using RCC1 antibody. The lane on the left is treated with synthesized peptide.

Usage

For Research Use Only. Not for use in diagnostic or therapeutic procedures.