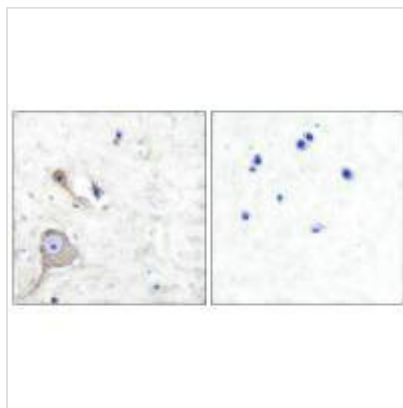




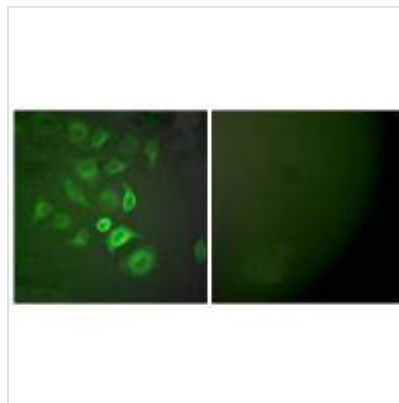
S100A1 Antibody

Product Code	CSB-PA224994
Storage	Upon receipt, store at -20°C or -80°C. Avoid repeated freeze.
Uniprot No.	P23297
Immunogen	Synthesized peptide derived from Human S100 A1.
Raised In	Rabbit
Species Reactivity	Human,Mouse,Rat
Specificity	The antibody detects endogenous levels of total S100 A1 protein.
Tested Applications	ELISA,WB,IHC,IF;WB:1:500-1:3000,IHC:1:50-1:100,IF:1:100-1:500
Form	Rabbit IgG in phosphate buffered saline (without Mg ²⁺ and Ca ²⁺), pH 7.4, 150mM NaCl, 0.02% sodium azide and 50% glycerol.
Purification Method	The antibody was affinity-purified from rabbit antiserum by affinity-chromatography using epitope-specific immunogen.
Clonality	Polyclonal
Alias	S100-ALPHA ; S100 CALCIUM-BINDING PROTEIN A1;
Product Type	Polyclonal Antibody
Immunogen Species	Homo sapiens (Human)
Target Names	S100A1

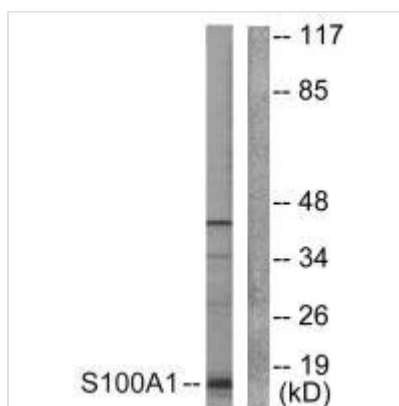
Image



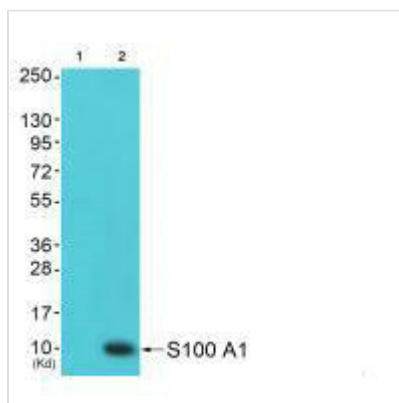
Immunohistochemical analysis of paraffin-embedded human brain tissue using S100 A1 antibody.



Immunofluorescence analysis of A549 cells, using S100 A1 antibody.



Western blot analysis of extracts from A549 cells, using S100 A1 antibody.



Western blot analysis of extracts from 293 cells (Lane 2), using S100 A1 antibody. The lane on the left is treated with synthesized peptide.