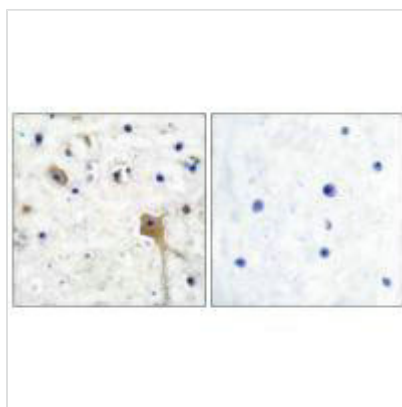




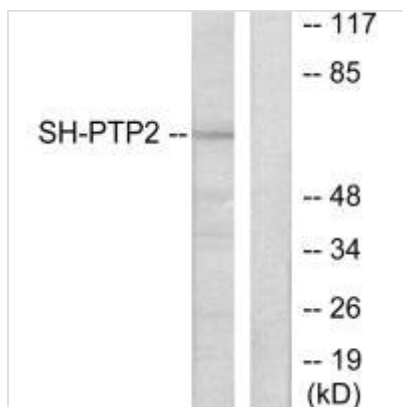
PTPN11 Antibody

Product Code	CSB-PA041940
Storage	Upon receipt, store at -20°C or -80°C. Avoid repeated freeze.
Uniprot No.	Q06124
Immunogen	Synthesized peptide derived from Human SH-PTP2.
Raised In	Rabbit
Species Reactivity	Human,Mouse,Rat
Specificity	The antibody detects endogenous levels of total SH-PTP2 protein.
Tested Applications	ELISA,WB,IHC;WB:1:500-1:3000,IHC:1:50-1:100
Form	Rabbit IgG in phosphate buffered saline (without Mg ²⁺ and Ca ²⁺), pH 7.4, 150mM NaCl, 0.02% sodium azide and 50% glycerol.
Purification Method	The antibody was affinity-purified from rabbit antiserum by affinity-chromatography using epitope-specific immunogen.
Clonality	Polyclonal
Alias	PTN11; PTP-1D; PTP-2C; PTP2C; PTPN11
Product Type	Polyclonal Antibody
Immunogen Species	Homo sapiens (Human)
Target Names	PTPN11

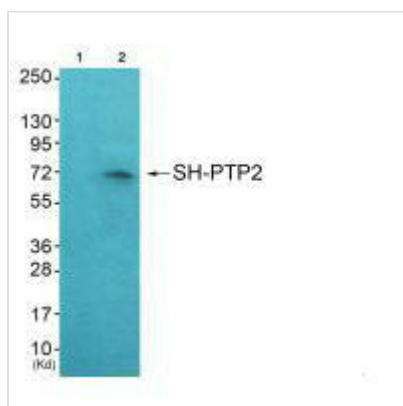
Image



Immunohistochemical analysis of paraffin-embedded human brain tissue using SH-PTP2 antibody.



Western blot analysis of extracts from COS7 cells, using SH-PTP2 antibody.



Western blot analysis of extracts from JK cells (Lane 2), using SH-PTP2 antibody. The lane on the left is treated with synthesized peptide.